

CaMKII gamma-Specific antibody



Catalog Number: 108921

Product name

CaMKII gamma-Specific antibody

Specificity

Human, Mouse, Rat; other species not tested.

Antibody description

CaMKII gamma-Specific Rabbit Polyclonal antibody. Positive WB detected in mouse brain tissue. Positive IHC detected in human skeletal muscle tissue. Observed molecular weight by Western-blot: 45-65kd

Preparation

This antibody was obtained by immunization of Peptide (Accession Number: NM_001222). Purification method: Antigen affinity purified.

Formulation

PBS with 0.1% sodium azide and 50% glycerol pH 7.3.

Storage

Store at -20°C. DO NOT ALIQUOT

Clonality

Polyclonal

Ig Type

Rabbit IgG

Applications

ELISA, WB, IHC

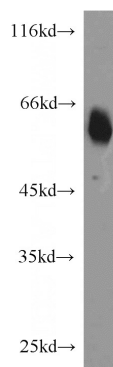
Dilutions

Recommended Dilution:

WB: 1:500-1:5000

IHC: 1:20-1:200

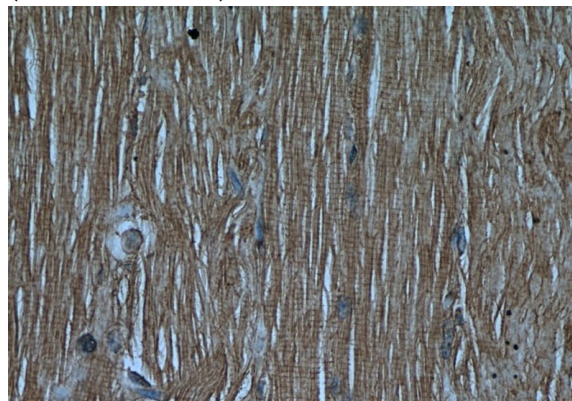
Validations



mouse brain tissue were subjected to SDS PAGE followed by western blot with Catalog No:108921(CAMK2G antibody) at dilution of 1:1000



Immunohistochemical of paraffin-embedded human skeletal muscle using Catalog No:108921(CAMK2G antibody) at dilution of 1:50 (under 10x lens)



Immunohistochemical of paraffin-embedded human skeletal muscle using Catalog No:108921(CAMK2G antibody) at dilution of 1:50 (under 40x lens)