

CaMKII gamma antibody



Catalog Number: 108920

Product name

CaMKII gamma antibody

WB: 1:1000-1:10000

IP: 1:500-1:5000

Specificity

Human, Mouse, Rat; other species not tested.

IHC: 1:20-1:200

IF: 1:10-1:100

Antibody description

CaMKII gamma Rabbit Polyclonal antibody. Positive WB detected in SMMC-7721 cells, human brain tissue. Positive IP detected in mouse heart tissue. Positive IHC detected in human pancreas cancer tissue. Positive IF detected in HepG2 cells. Observed molecular weight by Western-blot: 59 kDa

Preparation

This antibody was obtained by immunization of CaMKII gamma recombinant protein (Accession Number: NM_172169). Purification method: Antigen affinity purified.

Formulation

PBS with 0.1% sodium azide and 50% glycerol pH 7.3.

Storage

Store at -20°C. DO NOT ALIQUOT

Clonality

Polyclonal

Ig Type

Rabbit IgG

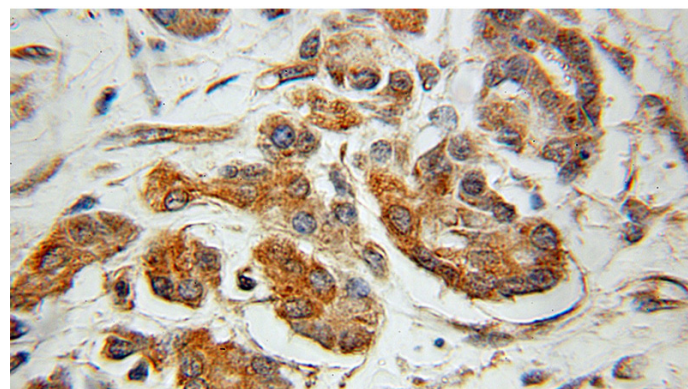
Applications

ELISA, IHC, IF, WB, IP

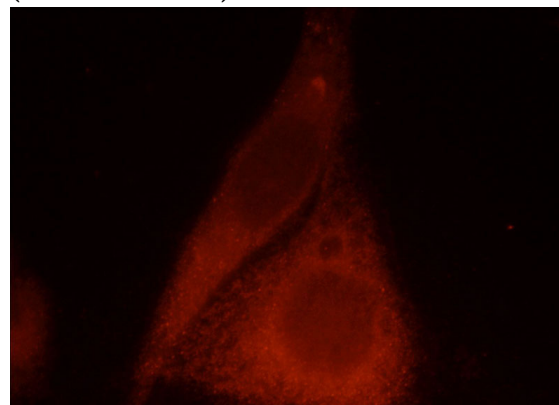
Dilutions

Recommended Dilution:

Validations



Immunohistochemical of paraffin-embedded human pancreas cancer using Catalog No:108920(CAMK2G antibody) at dilution of 1:100 (under 10x lens)

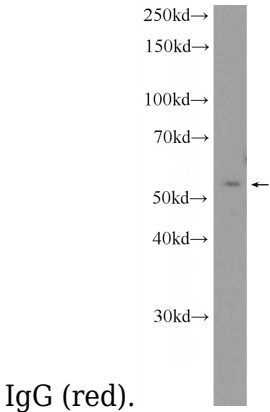


Immunofluorescent analysis of HepG2 cells, using CAMK2G antibody Catalog No:108920 at 1:25 dilution and Rhodamine-labeled goat anti-rabbit

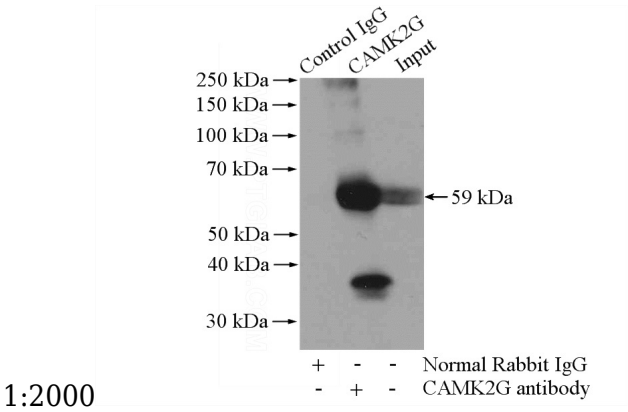
CaMKII gamma antibody



Catalog Number: 108920



SMMC-7721 cells were subjected to SDS PAGE followed by western blot with Catalog No:108920(CAMK2G Antibody) at dilution of



IP Result of anti-CAMK2G (IP:Catalog No:108920, 4ug; Detection:Catalog No:108920 1:1000) with mouse heart tissue lysate 3200ug.