

# Caspase 9/p35/p10 antibody



Catalog Number: 108881

## Product name

Caspase 9/p35/p10 antibody

## Specificity

Human, Mouse, Rat; other species not tested.

## Antibody description

Caspase 9/p35/p10 Rabbit Polyclonal antibody. Positive FC detected in HepG2 cells. Positive IHC detected in mouse lung tissue, human heart tissue. Positive IF detected in HepG2 cells. Positive WB detected in HeLa cells, HL-60 cells, Jurkat cells. Positive IP detected in HeLa cells. Observed molecular weight by Western-blot: 46 kDa

## Preparation

This antibody was obtained by immunization of Caspase 9/p35/p10 recombinant protein (Accession Number: NM\_001229). Purification method: Antigen affinity purified.

## Formulation

PBS with 0.1% sodium azide and 50% glycerol pH 7.3.

## Storage

Store at -20°C. DO NOT ALIQUOT

## Clonality

Polyclonal

## Ig Type

Rabbit IgG

## Applications

ELISA, IF, IHC, IP, WB, FC

## Dilutions

Recommended Dilution:

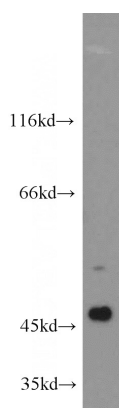
WB: 1:500-1:5000

IP: 1:200-1:1000

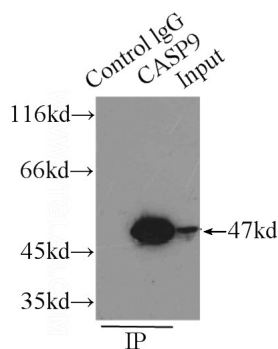
IHC: 1:10-1:100

IF: 1:10-1:100

## Validations



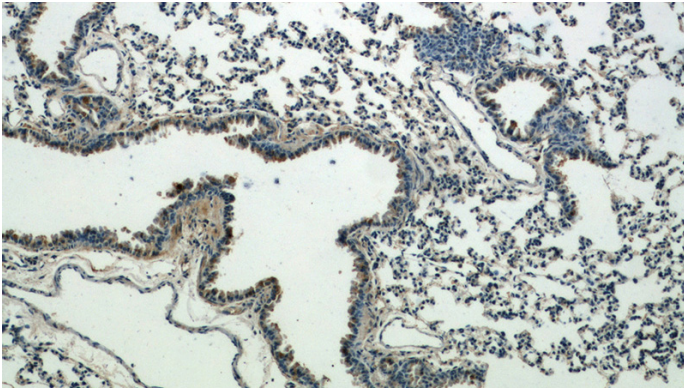
HeLa cells were subjected to SDS PAGE followed by western blot with Catalog No:108881(CASP9 antibody) at dilution of 1:1000



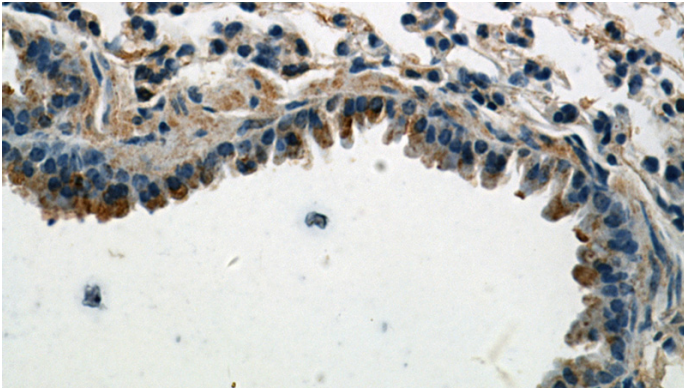
IP Result of anti-CASP9 (IP:Catalog No:108881, 3ug; Detection:Catalog No:108881 1:200) with HeLa cells lysate 2500ug.

# Caspase 9/p35/p10 antibody

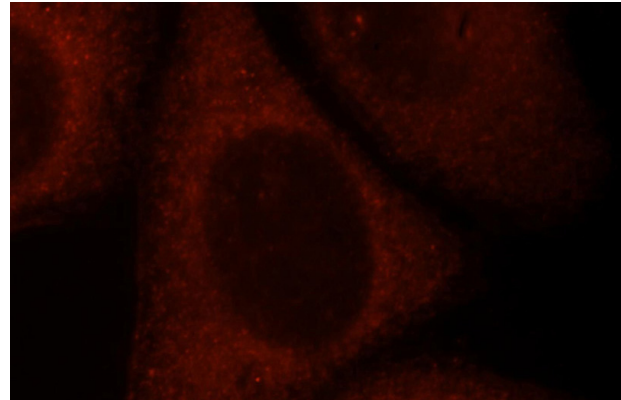
Catalog Number: 108881



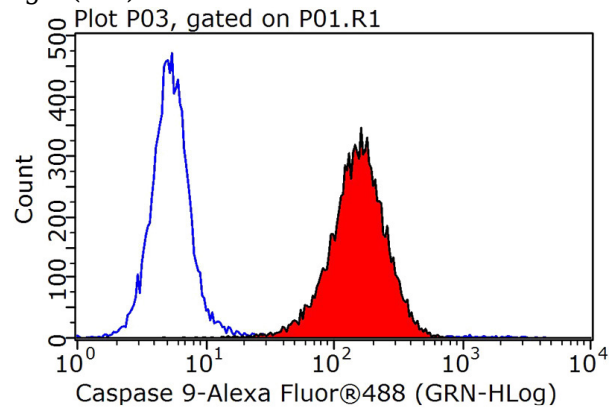
Immunohistochemical of paraffin-embedded mouse lung using Catalog No:108881(CASP9 antibody) at dilution of 1:25 (under 10x lens)



Immunohistochemical of paraffin-embedded mouse lung using Catalog No:108881(CASP9 antibody) at dilution of 1:25 (under 40x lens)



Immunofluorescent analysis of HepG2 cells, using CASP9 antibody Catalog No:108881 at 1:25 dilution and Rhodamine-labeled goat anti-rabbit IgG (red).



1X10<sup>6</sup> HepG2 cells were stained with 0.2ug Caspase 9 antibody (Catalog No:108881, red) and control antibody (blue). Fixed with 90% MeOH blocked with 3% BSA (30 min). Alexa Fluor 488-conjugated AffiniPure Goat Anti-Rabbit IgG(H+L) with dilution 1:1000.