

Caspase 12 antibody



Catalog Number: 108872

Product name

Caspase 12 antibody

WB: 1:500-1:5000

IP: 1:500-1:5000

Specificity

Human, Mouse; other species not tested.

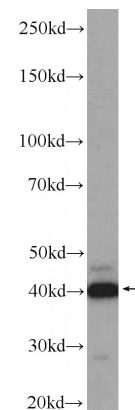
IHC: 1:20-1:200

IF: 1:10-1:100

Antibody description

Caspase 12 Rabbit Polyclonal antibody. Positive IF detected in HeLa cells. Positive IHC detected in human heart tissue. Positive WB detected in HEK-293 cells, HepG2 cells, Jurkat cells, L02 cells, mouse heart tissue, mouse lung tissue, NIH/3T3 cells. Positive IP detected in HEK-293 cells. Observed molecular weight by Western-blot: 36-42 kDa, 50 kDa

Validations



Preparation

This antibody was obtained by immunization of Peptide (Accession Number: NR_000035). Purification method: Antigen affinity purified.

HEK-293 cells were subjected to SDS PAGE followed by western blot with Catalog No:108872(CASP12 antibody) at dilution of 1:1000

Formulation

PBS with 0.02% sodium azide and 50% glycerol pH 7.3.

Storage

Store at -20°C. DO NOT ALIQUOT

Clonality

Polyclonal

Ig Type

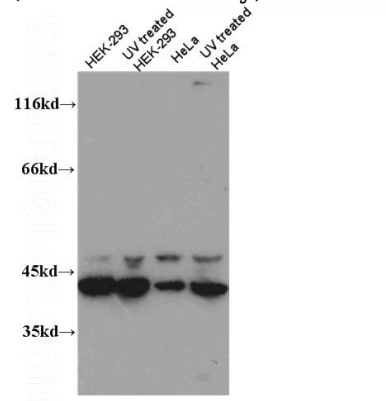
Rabbit IgG

Applications

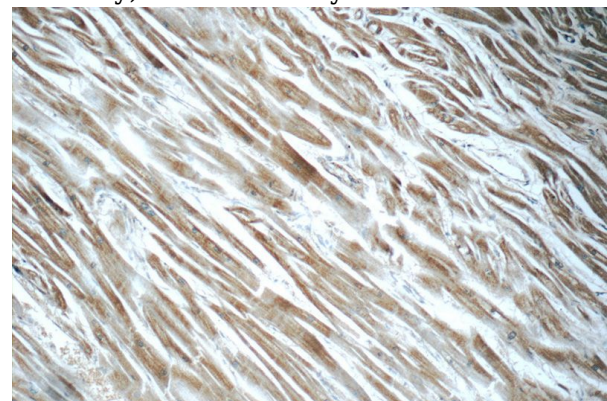
ELISA, IF, IHC, WB, IP

Dilutions

Recommended Dilution:



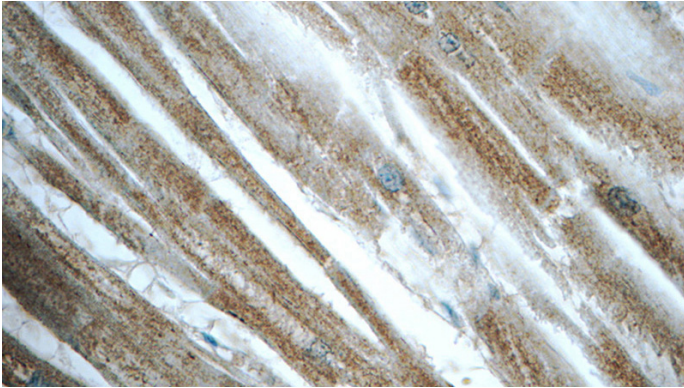
WB result of Catalog No:108872 (CASP12 antibody) with various lysates.



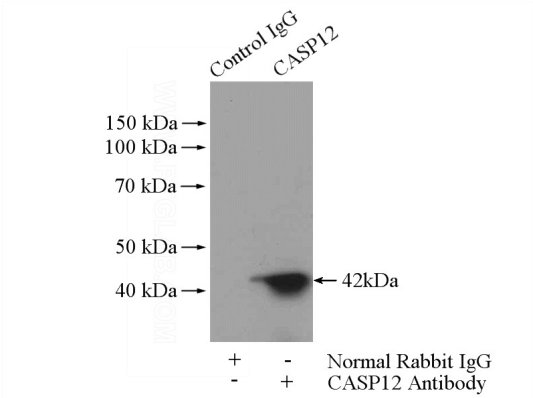
Caspase 12 antibody

Catalog Number: 108872

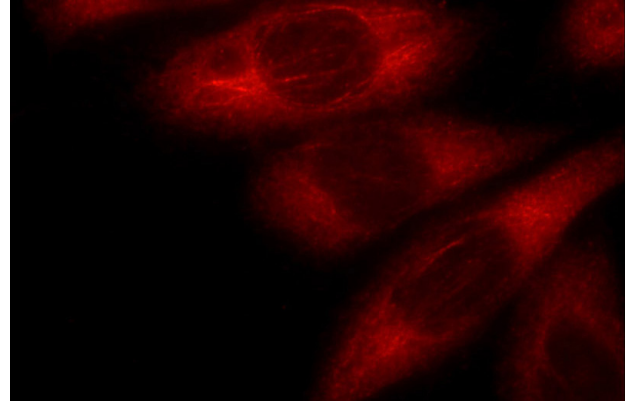
Immunohistochemistry of paraffin-embedded human heart tissue slide using Catalog No:108872(Caspase 12 Antibody) at dilution of 1:50 (under 10x lens)



Immunohistochemistry of paraffin-embedded human heart tissue slide using Catalog No:108872(Caspase 12 Antibody) at dilution of 1:50 (under 40x lens)



IP Result of anti-Caspase 12 (IP:Catalog No:108872, 4ug; Detection:Catalog No:108872 1:1000) with HEK-293 cells lysate 2000ug.



Immunofluorescent analysis of HeLa cells using Catalog No:108872(Caspase 12 Antibody) at dilution of 1:25 and Rhodamine-Goat anti-Rabbit IgG