

# Carboxypeptidase A6 antibody



Catalog Number: 108851

## Product name

Carboxypeptidase A6 antibody

IHC: 1:20-1:200

IF: 1:10-1:100

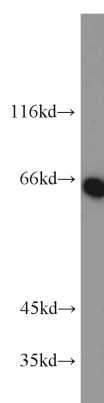
## Specificity

Human, Mouse, Rat; other species not tested.

## Validations

## Antibody description

Carboxypeptidase A6 Rabbit Polyclonal antibody. Positive IF detected in HepG2 cells. Positive IHC detected in human gliomas tissue. Positive WB detected in HepG2 cells, mouse brain tissue. Observed molecular weight by Western-blot: 65 kDa or 51 kDa



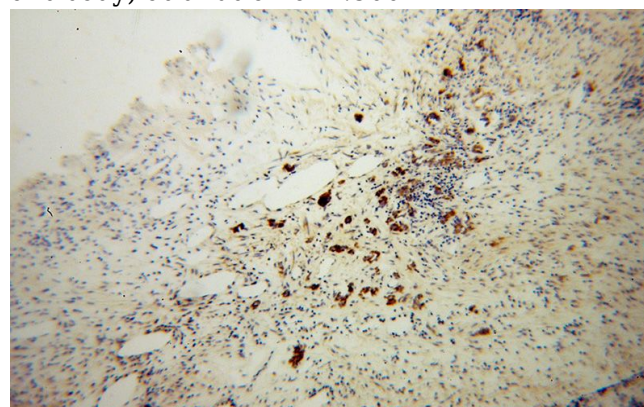
## Preparation

This antibody was obtained by immunization of Carboxypeptidase A6 recombinant protein (Accession Number: NM\_020361). Purification method: Antigen affinity purified.

HepG2 cells were subjected to SDS PAGE followed by western blot with Catalog No:108851(CPA6 antibody) at dilution of 1:500

## Formulation

PBS with 0.02% sodium azide and 50% glycerol pH 7.3.



## Storage

Store at -20°C. DO NOT ALIQUOT

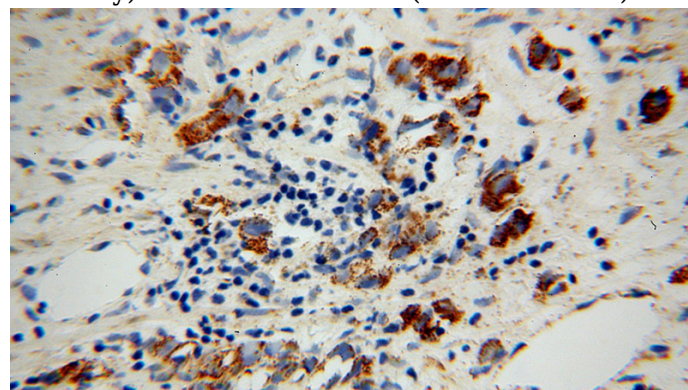
## Clonality

Polyclonal

Immunohistochemical of paraffin-embedded human gliomas using Catalog No:108851(CPA6 antibody) at dilution of 1:100 (under 10x lens)

## Ig Type

Rabbit IgG



## Applications

ELISA, WB, IHC, IF

## Dilutions

Recommended Dilution:

WB: 1:200-1:2000

Immunohistochemical of paraffin-embedded human gliomas using Catalog No:108851(CPA6

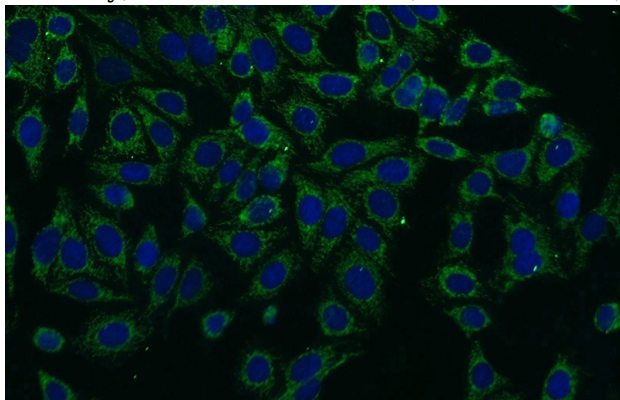
# Carboxypeptidase A6 antibody



Catalog Number: 108851

---

antibody) at dilution of 1:100 (under 40x lens)



Immunofluorescent analysis of HepG2 cells using Catalog No:108851(CPA6 Antibody) at dilution of 1:25 and Alexa Fluor 488-conjugated AffiniPure Goat Anti-Rabbit IgG(H+L)