

CAPRIN2 antibody

Catalog Number: 108840

Product name

CAPRIN2 antibody

IP: 1:200-1:1000

IF: 1:20-1:200

Specificity

Human, Mouse, Rat; other species not tested.

Antibody description

CAPRIN2 Rabbit Polyclonal antibody. Positive WB detected in SH-SY5Y cells, HEK-293 cells. Positive IP detected in SH-SY5Y cells. Positive IF detected in HepG2 cells. Observed molecular weight by Western-blot: 150kd

Preparation

This antibody was obtained by immunization of CAPRIN2 recombinant protein (Accession Number: BC007520). Purification method: Antigen affinity purified.

Formulation

PBS with 0.02% sodium azide and 50% glycerol pH 7.3.

Storage

Store at -20°C. DO NOT ALIQUOT

Clonality

Polyclonal

Ig Type

Rabbit IgG

Applications

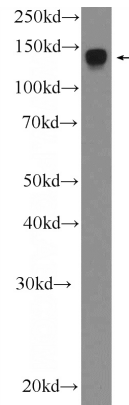
ELISA, IF, WB, IP

Dilutions

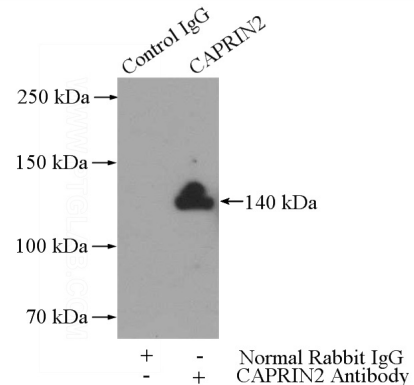
Recommended Dilution:

WB: 1:200-1:1000

Validations

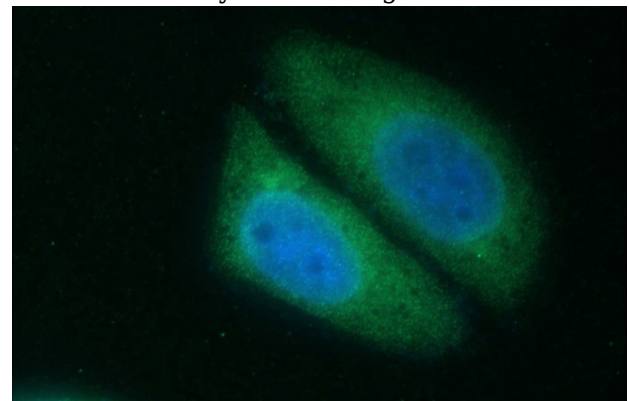


SH-SY5Y cells were subjected to SDS PAGE followed by western blot with Catalog No:108840(CAPRIN2 Antibody) at dilution of



1:300

IP Result of anti-CAPRIN2 (IP:Catalog No:108840, 4ug; Detection:Catalog No:108840 1:300) with SH-SY5Y cells lysate 3000ug.



Immunofluorescent analysis of HepG2 cells using

CAPRIN2 antibody



Catalog Number: 108840

Catalog No:108840(CAPRIN2 Antibody) at dilution of 1:50 and Alexa Fluor 488-conjugated AffiniPure Goat Anti-Rabbit IgG(H+L)