

# C6orf182 antibody



Catalog Number: 108782

## Product name

C6orf182 antibody

## Specificity

Human, Mouse, Monkey; other species not tested.

## Antibody description

C6orf182 Rabbit Polyclonal antibody. Positive WB detected in mouse brain tissue, A549 cells, COS-7 cells, HEK-293 cells, mouse kidney tissue, PC-3 cells. Observed molecular weight by Western-blot: 55-65 kda

## Preparation

This antibody was obtained by immunization of C6orf182 recombinant protein (Accession Number: NM\_001350665). Purification method: Antigen affinity purified.

## Formulation

PBS with 0.1% sodium azide and 50% glycerol pH 7.3.

## Storage

Store at -20°C. DO NOT ALIQUOT

## Clonality

Polyclonal

## Ig Type

Rabbit IgG

## Applications

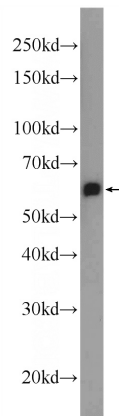
ELISA, WB

## Dilutions

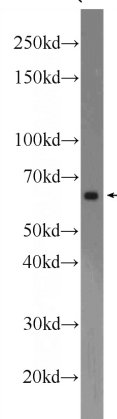
Recommended Dilution:

WB: 1:200-1:2000

## Validations



mouse brain tissue were subjected to SDS PAGE followed by western blot with Catalog No:108782(C6orf182 Antibody) at dilution of



1:600

COS-7 cells were subjected to SDS PAGE followed by western blot with Catalog No:108782(C6orf182 Antibody) at dilution of 1:600