

# C5orf26 antibody

Catalog Number: 108736

## Product name

C5orf26 antibody

## Specificity

Human; other species not tested.

## Antibody description

C5orf26 Rabbit Polyclonal antibody. Positive IHC detected in human liver cancer tissue, human brain tissue. Positive IF detected in HepG2 cells, HeLa cells.

## Preparation

This antibody was obtained by immunization of C5orf26 recombinant protein (Accession Number: BC112077). Purification method: Antigen affinity purified.

## Formulation

PBS with 0.1% sodium azide and 50% glycerol pH 7.3.

## Storage

Store at -20°C. DO NOT ALIQUOT

## Clonality

Polyclonal

## Ig Type

Rabbit IgG

## Applications

ELISA, IHC, IF

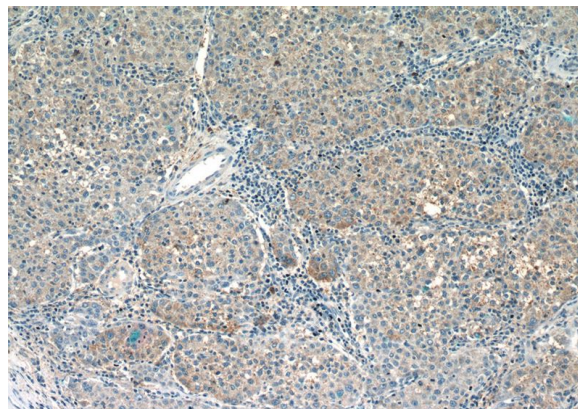
## Dilutions

Recommended Dilution:

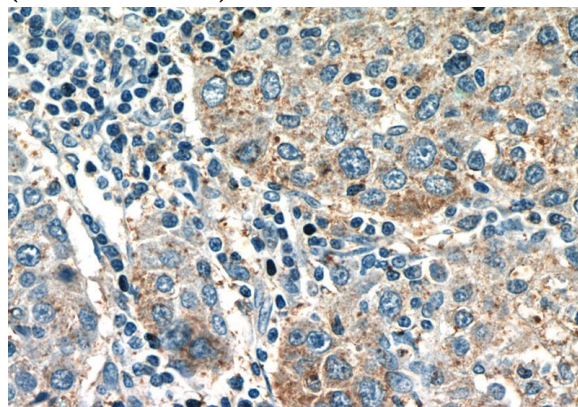
IHC: 1:20-1:200

IF: 1:10-1:100

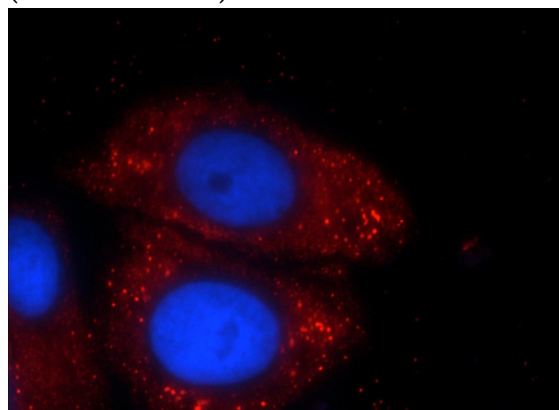
## Validations



Immunohistochemistry of paraffin-embedded human liver cancer slide using Catalog No:108736(C5orf26 Antibody) at dilution of 1:50 (under 10x lens)



Immunohistochemistry of paraffin-embedded human liver cancer slide using Catalog No:108736(C5orf26 Antibody) at dilution of 1:50 (under 40x lens)



Immunofluorescent analysis of HepG2 cells using Catalog No:108736(C5orf26 Antibody) at dilution of 1:25 and Rhodamine-Goat anti-Rabbit IgG