

# C3orf38 antibody



Catalog Number: 108724

## Product name

C3orf38 antibody

## Immunogen

[Human C3orf38 Recombinant protein \(His tag\)](#)

## Specificity

Human, Mouse; other species not tested.

## Antibody description

C3orf38 Rabbit Polyclonal antibody. Positive IF detected in L02 cells. Positive WB detected in L02 cells, Neuro-2a cells. Observed molecular weight by Western-blot: 35-37 kDa

## Preparation

This antibody was obtained by immunization of C3orf38 recombinant protein (Accession Number: NM\_173824). Purification method: Antigen affinity purified.

## Formulation

PBS with 0.1% sodium azide and 50% glycerol pH 7.3.

## Storage

Store at -20°C. DO NOT ALIQUOT

## Clonality

Polyclonal

## Ig Type

Rabbit IgG

## Applications

ELISA, WB, IF

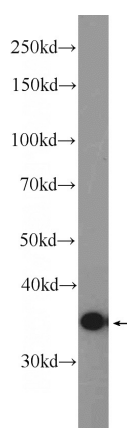
## Dilutions

Recommended Dilution:

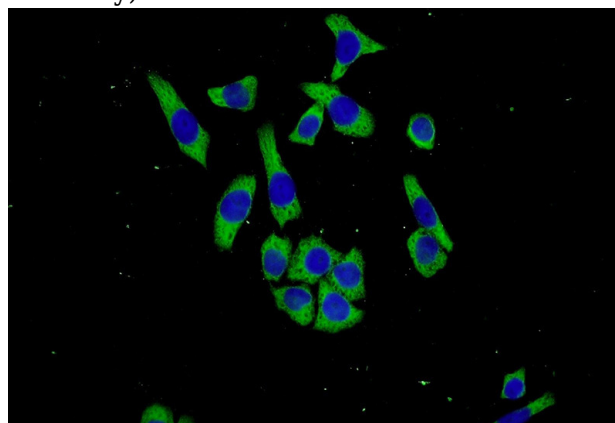
WB: 1:200-1:2000

IF: 1:20-1:200

## Validations



L02 cells were subjected to SDS PAGE followed by western blot with Catalog No:108724(C3orf38 Antibody) at dilution of 1:600



Immunofluorescent analysis of L02 cells using Catalog No:108724(C3orf38 Antibody) at dilution of 1:50 and Alexa Fluor 488-conjugated AffiniPure Goat Anti-Rabbit IgG(H+L)