

C13orf30 antibody



Catalog Number: 108653

Product name

C13orf30 antibody

Specificity

Human; other species not tested.

Antibody description

C13orf30 Rabbit Polyclonal antibody. Positive IHC detected in human kidney tissue. Positive IF detected in MDCK cells.

Preparation

This antibody was obtained by immunization of C13orf30 recombinant protein (Accession Number: NM_182508). Purification method: Antigen affinity purified.

Formulation

PBS with 0.1% sodium azide and 50% glycerol pH 7.3.

Storage

Store at -20°C. DO NOT ALIQUOT

Clonality

Polyclonal

Ig Type

Rabbit IgG

Applications

ELISA, IF, IHC

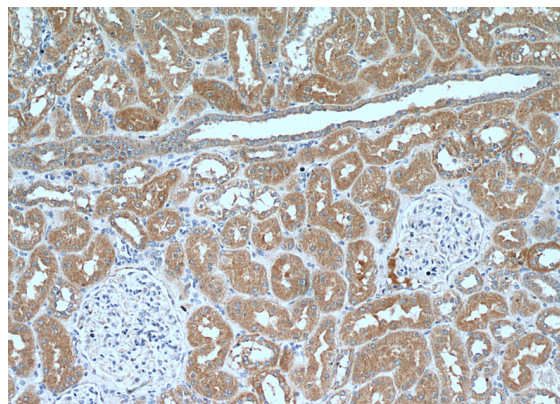
Dilutions

Recommended Dilution:

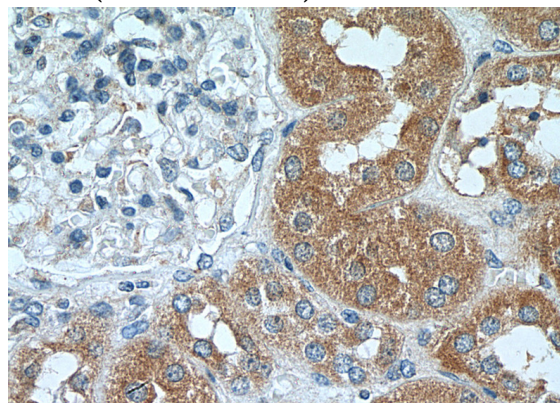
IHC: 1:50-1:500

IF: 1:10-1:100

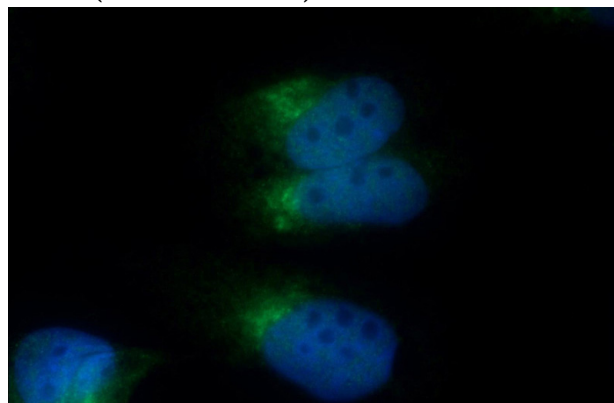
Validations



Immunohistochemistry of paraffin-embedded human kidney tissue slide using Catalog No:108653(C13orf30 Antibody) at dilution of 1:200 (under 10x lens).



Immunohistochemistry of paraffin-embedded human kidney tissue slide using Catalog No:108653(C13orf30 Antibody) at dilution of 1:200 (under 40x lens).



Immunofluorescent analysis of MDCK cells using Catalog No:108653(C13orf30 Antibody) at dilution of 1:25 and Alexa Fluor 488-conjugated AffiniPure

C13orf30 antibody



Catalog Number: 108653

Goat Anti-Rabbit IgG(H+L)