

C1orf106 antibody

Catalog Number: 108631

Product name

C1orf106 antibody

IP: 1:200-1:2000

IHC: 1:20-1:200

Specificity

Human, Mouse, Rat; other species not tested.

Antibody description

C1orf106 Rabbit Polyclonal antibody. Positive IHC detected in human colon tissue, human colon cancer tissue. Positive WB detected in mouse kidney tissue, HEK-293 cells. Positive IP detected in mouse kidney tissue. Observed molecular weight by Western-blot: 70-73 kDa

Preparation

This antibody was obtained by immunization of C1orf106 recombinant protein (Accession Number: NM_018265). Purification method: Antigen affinity purified.

Formulation

PBS with 0.02% sodium azide and 50% glycerol pH 7.3.

Storage

Store at -20°C. DO NOT ALIQUOT

Clonality

Polyclonal

Ig Type

Rabbit IgG

Applications

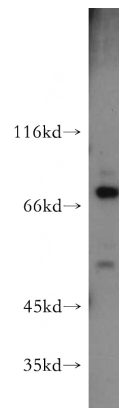
ELISA, WB, IHC, IP

Dilutions

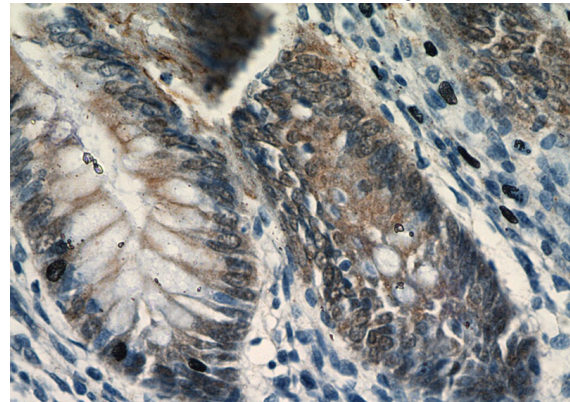
Recommended Dilution:

WB: 1:500-1:5000

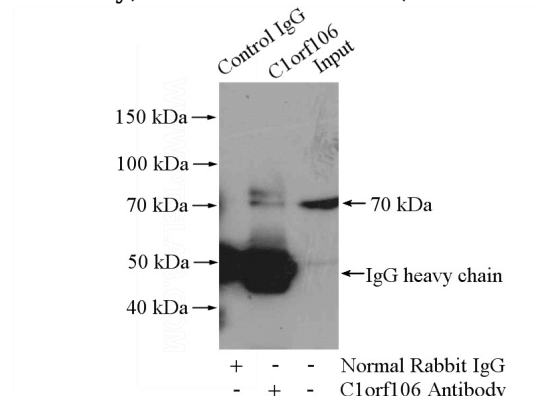
Validations



mouse kidney tissue were subjected to SDS PAGE followed by western blot with Catalog No:108631(C1orf106 antibody) at dilution of 1:300



Immunohistochemical of paraffin-embedded human colon using Catalog No:108631(C1orf106 antibody) at dilution of 1:50 (under 40x lens)



IP Result of anti-C1orf106 (IP:Catalog No:108631, 4ug; Detection:Catalog No:108631 1:500) with

C1orf106 antibody



Catalog Number: 108631

mouse kidney tissue lysate 4800ug.