

C18orf21 antibody



Catalog Number: 108614

Product name

C18orf21 antibody

Immunogen

[Human C18orf21 Recombinant protein \(His tag\)](#)

Specificity

Human; other species not tested.

Antibody description

C18orf21 Rabbit Polyclonal antibody. Positive IF detected in COLO 320 cells. Positive IHC detected in human pancreas tissue, human colon cancer tissue. Positive WB detected in COLO 320 cells. Observed molecular weight by Western-blot: 25-28 kDa

Preparation

This antibody was obtained by immunization of C18orf21 recombinant protein (Accession Number: NM_031446). Purification method: Antigen affinity purified.

Formulation

PBS with 0.1% sodium azide and 50% glycerol pH 7.3.

Storage

Store at -20°C. DO NOT ALIQUOT

Clonality

Polyclonal

Ig Type

Rabbit IgG

Applications

ELISA, IHC, WB, IF

Dilutions

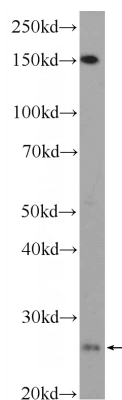
Recommended Dilution:

WB: 1:200-1:2000

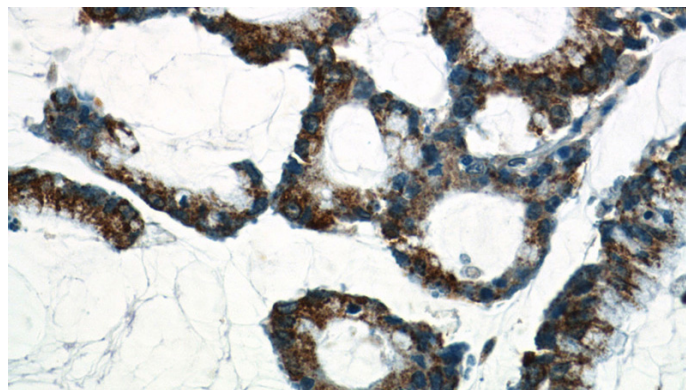
IHC: 1:20-1:200

IF: 1:20-1:200

Validations



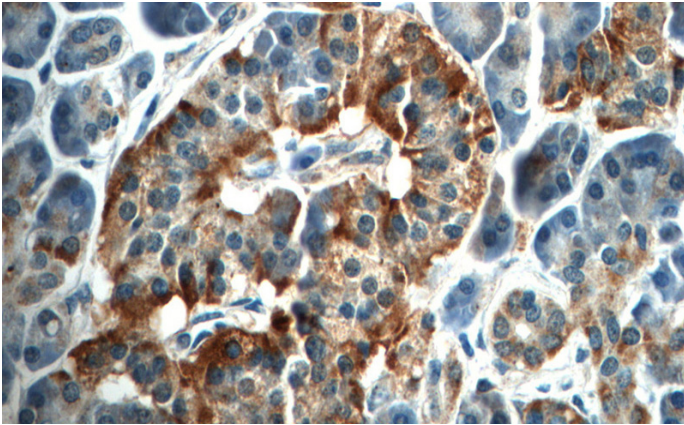
COLO 320 cells were subjected to SDS PAGE followed by western blot with Catalog No:108614(C18orf21 Antibody) at dilution of 1:600



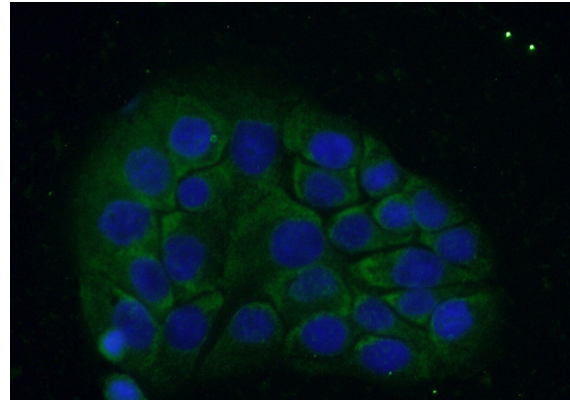
Immunohistochemistry of paraffin-embedded human colon cancer tissue slide using Catalog No:108614(C18orf21 Antibody) at dilution of 1:50 (under 40x lens)

C18orf21 antibody

Catalog Number: 108614



Immunohistochemistry of paraffin-embedded human pancreas tissue slide using Catalog No:108614(C18orf21 Antibody) at dilution of 1:50 (under 40x lens)



Immunofluorescent analysis of (-20oc Ethanol) fixed COLO 320 cells using Catalog No:108614(C18orf21 Antibody) at dilution of 1:50 and Alexa Fluor 488-conjugated AffiniPure Goat Anti-Rabbit IgG(H+L)