

BPHL antibody

Catalog Number: 108569

Product name

BPHL antibody

Specificity

human, mouse, rat; other species not tested.

Antibody description

BPHL Rabbit Polyclonal antibody. Positive WB detected in human kidney tissue, human liver tissue, MCF7 cells. Positive IHC detected in human kidney. Observed molecular weight by Western-blot: 27kd

Preparation

This antibody was obtained by immunization of BPHL recombinant protein (Accession Number: BC037778). Purification method: Antigen affinity purified.

Formulation

PBS with 0.02% sodium azide and 50% glycerol pH 7.3.

Storage

Store at -20°C. DO NOT ALIQUOT

Clonality

Polyclonal

Ig Type

Rabbit IgG

Applications

ELISA, WB, IHC

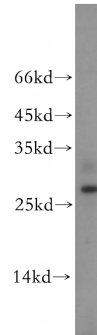
Dilutions

Recommended Dilution:

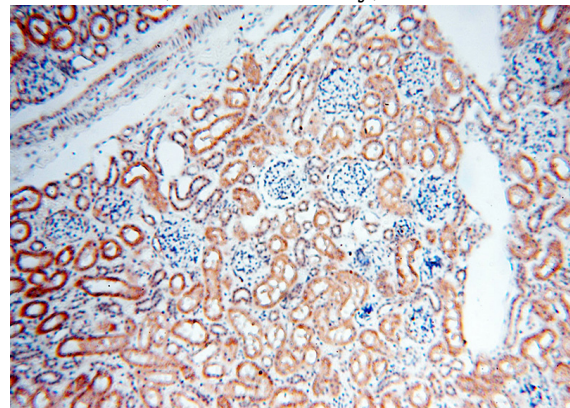
WB: 1:500-1:5000

IHC: 1:20-1:200

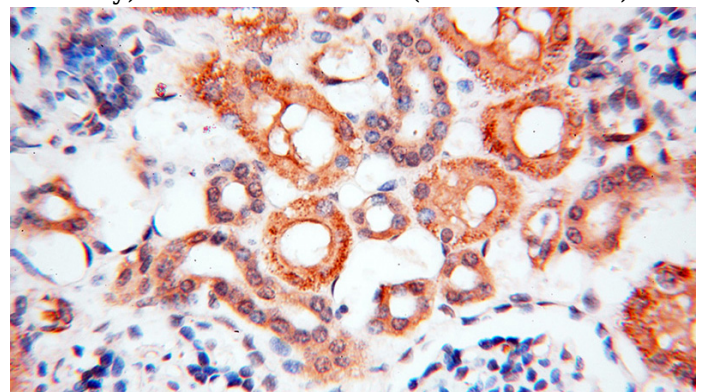
Validations



human kidney tissue were subjected to SDS PAGE followed by western blot with Catalog No:108569(BPHL antibody) at dilution of 1:500



Immunohistochemical of paraffin-embedded human kidney using Catalog No:108569(BPHL antibody) at dilution of 1:100 (under 40x lens)



Immunohistochemical of paraffin-embedded human kidney using Catalog No:108569(BPHL antibody) at dilution of 1:100 (under 40x lens)