

# BXDC1 antibody



Catalog Number: 108557

## Product name

BXDC1 antibody

## Immunogen

[Human BXDC1 Recombinant protein \(His tag\)](#)

## Specificity

Human, Mouse, Rat; other species not tested.

## Antibody description

BXDC1 Rabbit Polyclonal antibody. Positive WB detected in HeLa cells, A549 cells, HL-60 cells. Positive IF detected in HeLa cells. Observed molecular weight by Western-blot: 36 kDa

## Preparation

This antibody was obtained by immunization of BXDC1 recombinant protein (Accession Number: NM\_032194). Purification method: Antigen affinity purified.

## Formulation

PBS with 0.02% sodium azide and 50% glycerol pH 7.3.

## Storage

Store at -20°C. DO NOT ALIQUOT

## Clonality

Polyclonal

## Ig Type

Rabbit IgG

## Applications

ELISA, WB, IF

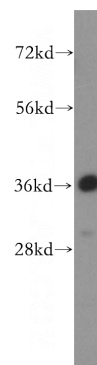
## Dilutions

Recommended Dilution:

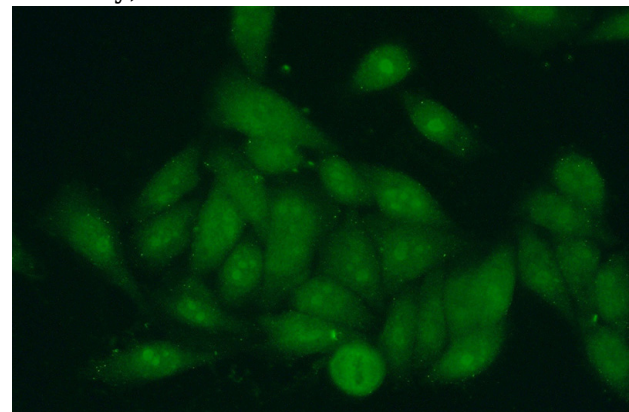
WB: 1:500-1:5000

IF: 1:50-1:500

## Validations



HeLa cells were subjected to SDS PAGE followed by western blot with Catalog No:108557(BXDC1 antibody) at dilution of 1:500



Immunofluorescent analysis of (10% Formaldehyde) fixed HeLa cells using Catalog No:108557(BXDC1 Antibody) at dilution of 1:50 and Alexa Fluor 488-conjugated AffiniPure Goat Anti-Rabbit IgG(H+L)