

# B23 antibody

Catalog Number: 108523

## Product name

B23 antibody

WB: 1:500-1:5000

IP: 1:1000-1:10000

## Specificity

Human; other species not tested.

IHC: 1:20-1:200

## Antibody description

B23 Rabbit Polyclonal antibody. Positive IP detected in Jurkat cells. Positive WB detected in multi-cells, HEK-293 cells, HeLa cells, Jurkat cells, K-562 cells. Positive IHC detected in human colon cancer tissue, human breast cancer tissue. Observed molecular weight by Western-blot: 35-40kd

## Preparation

This antibody was obtained by immunization of B23 recombinant protein (Accession Number: NM\_001355006). Purification method: Antigen affinity purified.

## Formulation

PBS with 0.1% sodium azide and 50% glycerol pH 7.3.

## Storage

Store at -20°C. DO NOT ALIQUOT

## Clonality

Polyclonal

## Ig Type

Rabbit IgG

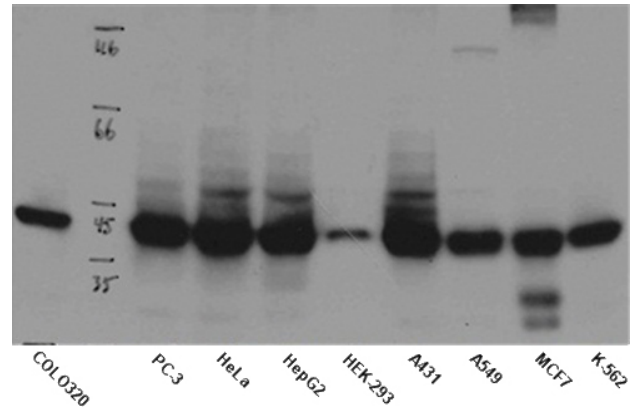
## Applications

ELISA, IHC, WB, IP

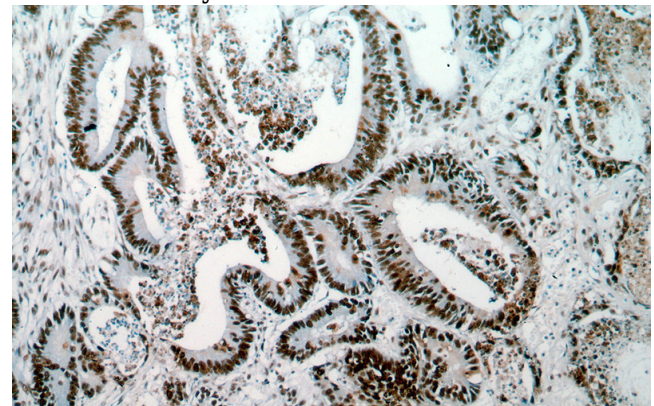
## Dilutions

Recommended Dilution:

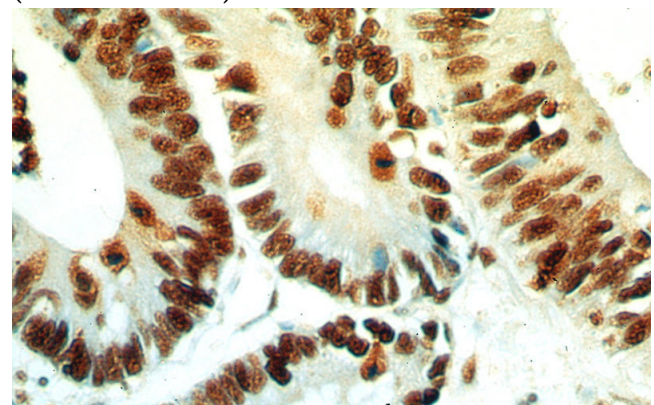
## Validations



WB result of anti-NPM1 (Catalog No:117084) in different cell lysates.



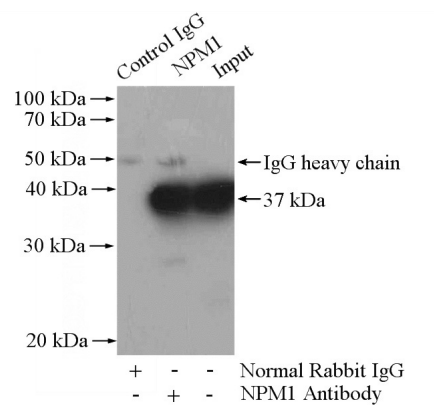
Immunohistochemical of paraffin-embedded human colon cancer using Catalog No:117084(NPM1 antibody) at dilution of 1:100 (under 10x lens)



# B23 antibody

Catalog Number: 108523

Immunohistochemical of paraffin-embedded human colon cancer using Catalog No:117084(NPM1 antibody) at dilution of 1:100 (under 40x lens)



IP Result of anti-B23 (IP:Catalog No:117084, 4ug; Detection:Catalog No:117084 1:2000) with Jurkat cells lysate 3200ug.