

AXL antibody

Catalog Number: 108519

General Information

Product name:

AXL antibody

Immunogen:

Applications:

ELISA, WB, IP, FC

Specificity:

Human; other species not tested.

Antibody description:

AXL Rabbit Polyclonal antibody. Positive FC detected in HeLa cells. Positive WB detected in HepG2 cells, HeLa cells, HT-1080 cells, human liver tissue. Positive IP detected in HepG2 cells. Observed molecular weight by Western-blot: 140 kDa

Properties

Preparation:

This antibody was obtained by immunization of AXL recombinant protein (Accession Number: BC032229). Purification method: Antigen affinity purified.

Formulation:

PBS with 0.02% sodium azide and 50% glycerol pH 7.3.

Storage:

Store at -20°C. DO NOT ALIQUOT

Clonality:

Polyclonal

Ig Type:Rabbit IgG

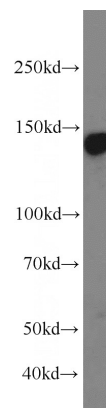
Applications

Recommended Dilution:

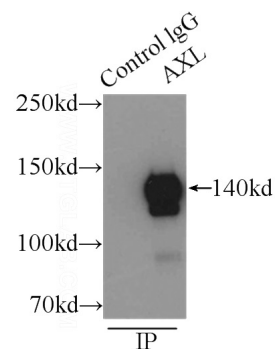
WB: 1:500-1:5000

IP: 1:500-1:5000

Validations



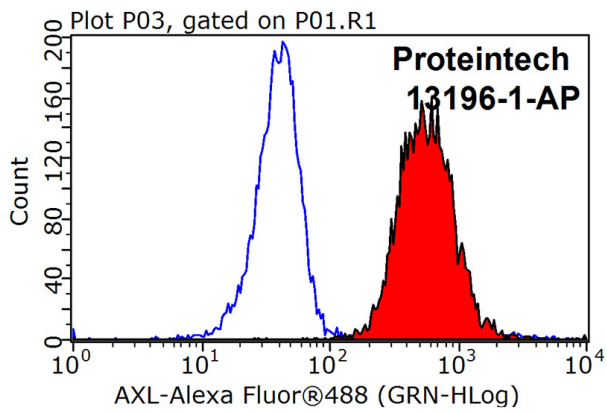
HepG2 cells were subjected to SDS PAGE followed by western blot with Catalog No:117080(AXL antibody) at dilution of 1:1500



IP Result of anti-AXL (IP:Catalog No:117080, 5ug; Detection:Catalog No:117080 1:1000) with HepG2 cells lysate 9000ug.

AXL antibody

Catalog Number: 108519



1X10⁶ HeLa cells were stained with 0.2ug AXL antibody (Catalog No:117080, red) and control antibody (blue). Fixed with 90% MeOH blocked with 3% BSA (30 min). Alexa Fluor 488-conjugated AffiniPure Goat Anti-Rabbit IgG(H+L) with dilution 1:1000.