

# BHLHE22 antibody



Catalog Number: 108492

## Product name

BHLHE22 antibody

## Specificity

Human, Mouse; other species not tested.

## Antibody description

BHLHE22 Rabbit Polyclonal antibody. Positive IF detected in SH-SY5Y cells. Positive WB detected in SH-SY5Y cells. Observed molecular weight by Western-blot: 37 kDa

## Preparation

This antibody was obtained by immunization of BHLHE22 recombinant protein (Accession Number: NM\_152414). Purification method: Antigen affinity purified.

## Formulation

PBS with 0.1% sodium azide and 50% glycerol pH 7.3.

## Storage

Store at -20°C. DO NOT ALIQUOT

## Clonality

Polyclonal

## Ig Type

Rabbit IgG

## Applications

ELISA, WB, IF

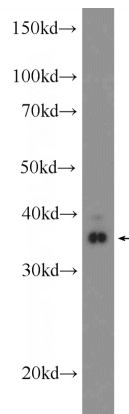
## Dilutions

Recommended Dilution:

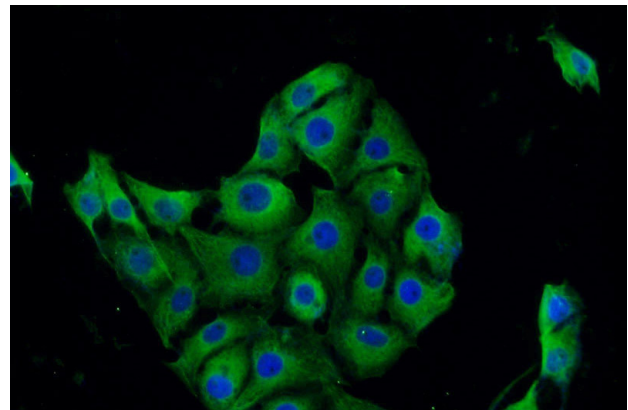
WB: 1:200-1:1000

IF: 1:10-1:100

## Validations



SH-SY5Y cells were subjected to SDS PAGE followed by western blot with Catalog No:117137(BHLHE22 Antibody) at dilution of 1:300



Immunofluorescent analysis of SH-SY5Y cells using Catalog No:117137(BHLHE22 Antibody) at dilution of 1:25 and Alexa Fluor 488-conjugated AffiniPure Goat Anti-Rabbit IgG(H+L)