

B-Myb antibody

Catalog Number: 108471

Product name

B-Myb antibody

IP: 1:200-1:1000

IF: 1:10-1:100

Specificity

Human, Mouse, Rat; other species not tested.

Antibody description

B-Myb Rabbit Polyclonal antibody. Positive IF detected in HepG2 cells, HeLa cells. Positive WB detected in HeLa cells. Positive IP detected in HeLa cells. Observed molecular weight by Western-blot: 90 kDa

Preparation

This antibody was obtained by immunization of B-Myb recombinant protein (Accession Number: NM_002466). Purification method: Antigen affinity purified.

Formulation

PBS with 0.02% sodium azide and 50% glycerol pH 7.3.

Storage

Store at -20°C. DO NOT ALIQUOT

Clonality

Polyclonal

Ig Type

Rabbit IgG

Applications

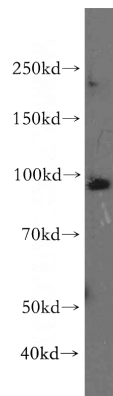
ELISA, WB, IF, IP

Dilutions

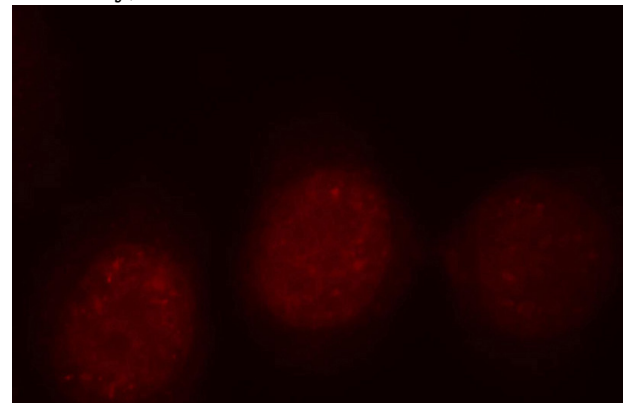
Recommended Dilution:

WB: 1:200-1:2000

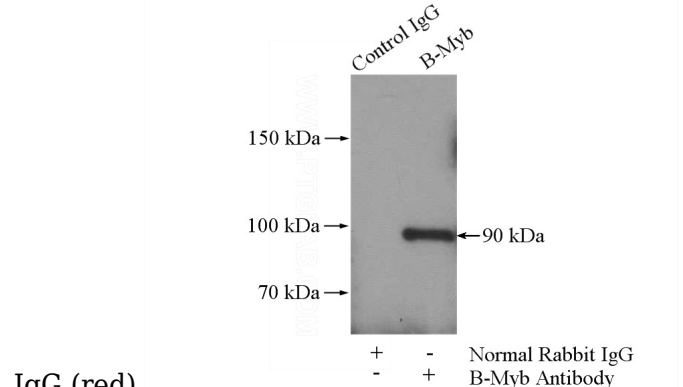
Validations



HeLa cells were subjected to SDS PAGE followed by western blot with Catalog No:117206(MYBL2 antibody) at dilution of 1:300



Immunofluorescent analysis of HepG2 cells, using MYBL2 antibody Catalog No:117206 at 1:25 dilution and Rhodamine-labeled goat anti-rabbit



IgG (red).

IP Result of anti-MYBL2 (IP:Catalog No:117206,

B-Myb antibody



Catalog Number: 108471

4ug; Detection:Catalog No:117206 1:300) with HeLa cells lysate 1520ug.