

BMP7 antibody

Catalog Number: 108465

Product name

BMP7 antibody

WB: 1:500-1:5000

IP: 1:200-1:2000

Specificity

Human, Mouse, Rat; other species not tested.

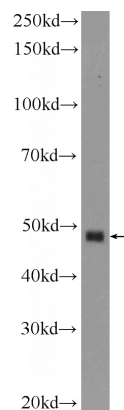
IHC: 1:20-1:200

IF: 1:20-1:200

Antibody description

BMP7 Rabbit Polyclonal antibody. Positive IP detected in HEK-293 cells. Positive WB detected in HEK-293 cells, MCF7 cells. Positive IF detected in HeLa cells. Positive IHC detected in human renal cell carcinoma tissue, human bladder tissue, human kidney tissue. Observed molecular weight by Western-blot: 49 kDa

Validations



Preparation

This antibody was obtained by immunization of BMP7 recombinant protein (Accession Number: NM_001719). Purification method: Antigen affinity purified.

HEK-293 cells were subjected to SDS PAGE followed by western blot with Catalog No:117200(BMP7 Antibody) at dilution of 1:1000

Formulation

PBS with 0.1% sodium azide and 50% glycerol pH 7.3.

Storage

Store at -20°C. DO NOT ALIQUOT

Clonality

Polyclonal

Ig Type

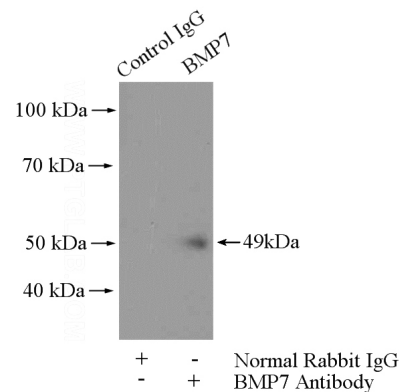
Rabbit IgG

Applications

ELISA, IHC, WB, IP, IF

Dilutions

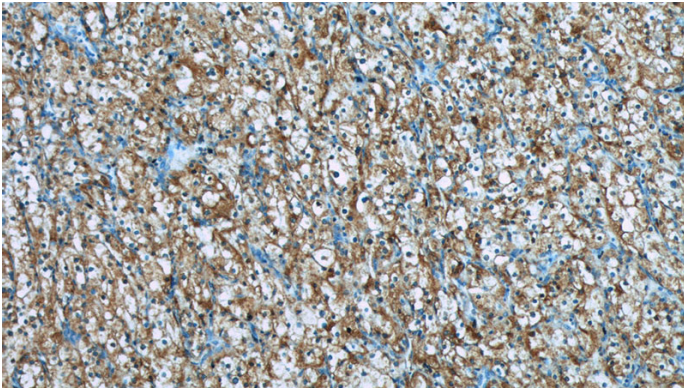
Recommended Dilution:



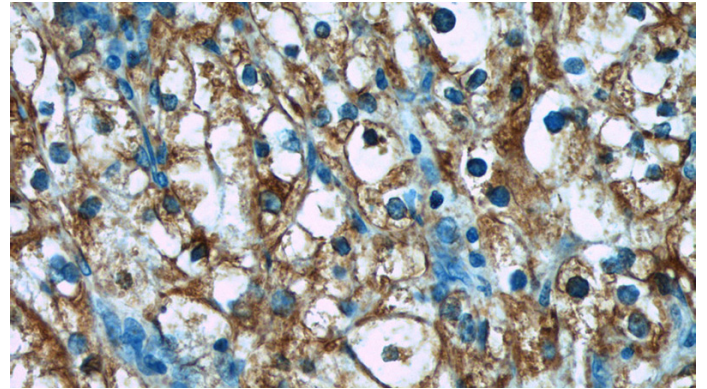
IP Result of anti-BMP7 (IP:Catalog No:117200, 4ug; Detection:Catalog No:117200 1:800) with HEK-293 cells lysate 2800ug.


BMP7 antibody

Catalog Number: 108465



Immunohistochemistry of paraffin-embedded human renal cell carcinoma tissue slide using Catalog No:117200(BMP7 Antibody) at dilution of 1:50 (under 10x lens)



Immunohistochemistry of paraffin-embedded human renal cell carcinoma tissue slide using Catalog No:117200(BMP7 Antibody) at dilution of 1:50 (under 40x lens) 

Immunofluorescent analysis of HeLa cells using Catalog No:117200(BMP7 Antibody) at dilution of 1:50 and Alexa Fluor 488-conjugated AffiniPure Goat Anti-Rabbit IgG(H+L)