

# BMP3 antibody

Catalog Number: 108462

## Product name

BMP3 antibody

## Specificity

Human; other species not tested.

## Antibody description

BMP3 Rabbit Polyclonal antibody. Positive IHC detected in human liver cancer tissue, human liver tissue, human lung cancer tissue. Positive WB detected in Recombinant protein.

## Preparation

This antibody was obtained by immunization of BMP3 recombinant protein (Accession Number: NM\_001201). Purification method: Antigen affinity purified.

## Formulation

PBS with 0.02% sodium azide and 50% glycerol pH 7.3.

## Storage

Store at -20°C. DO NOT ALIQUOT

## Clonality

Polyclonal

## Ig Type

Rabbit IgG

## Applications

ELISA, WB, IHC

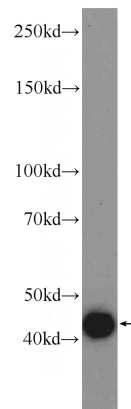
## Dilutions

Recommended Dilution:

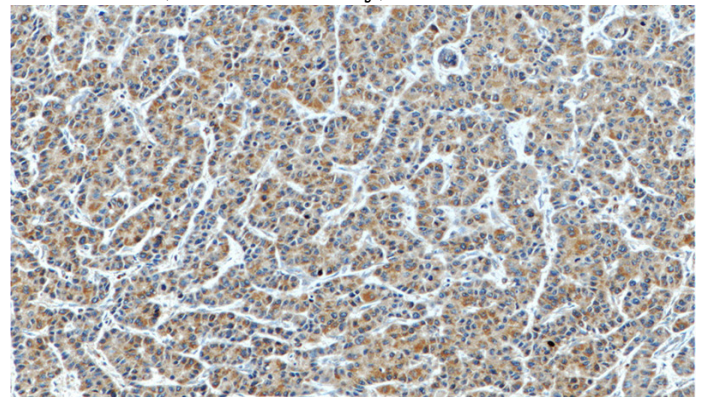
WB: 1:500-1:5000

IHC: 1:20-1:200

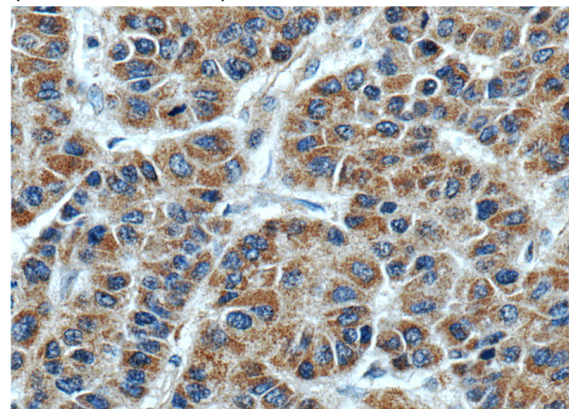
## Validations



Recombinant protein were subjected to SDS PAGE followed by western blot with Catalog No:117197(BMP3 Antibody) at dilution of 1:1000



Immunohistochemistry of paraffin-embedded human liver cancer tissue slide using Catalog No:117197(BMP3 Antibody) at dilution of 1:50 (under 10x lens)



Immunohistochemistry of paraffin-embedded human liver cancer tissue slide using Catalog No:117197(BMP3 Antibody) at dilution of 1:50 (under 40x lens)