

# Beclin 1 antibody



Catalog Number: 108441

## Product name

Beclin 1 antibody

Recommended Dilution:

WB: 1:500-1:5000

## Specificity

Human, Mouse, Rat; other species not tested.

IP: 1:200-1:2000

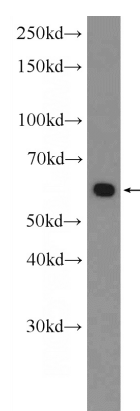
IHC: 1:20-1:200

## Antibody description

Beclin 1 Rabbit Polyclonal antibody. Positive IP detected in HeLa cells. Positive WB detected in MDA-MB-453s cells, A431 cells, HEK-293 cells, HeLa cells, HT-1080 cells, human placenta tissue, L02 cells, mouse brain tissue, NIH/3T3 cells, PC-3 cells, Raji cells, rat brain tissue. Positive IHC detected in human colon cancer tissue. Positive IF detected in NIH/3T3 cells. Observed molecular weight by Western-blot: 60 kDa

IF: 1:20-1:200

## Validations



## Preparation

This antibody was obtained by immunization of Beclin 1 recombinant protein (Accession Number: NM\_001313998). Purification method: Antigen affinity purified.

MDA-MB-453s cells were subjected to SDS PAGE followed by western blot with Catalog No:117114(Beclin 1 Antibody) at dilution of

## Formulation

PBS with 0.1% sodium azide and 50% glycerol pH 7.3.

## Storage

Store at -20°C. DO NOT ALIQUOT

## Clonality

Polyclonal

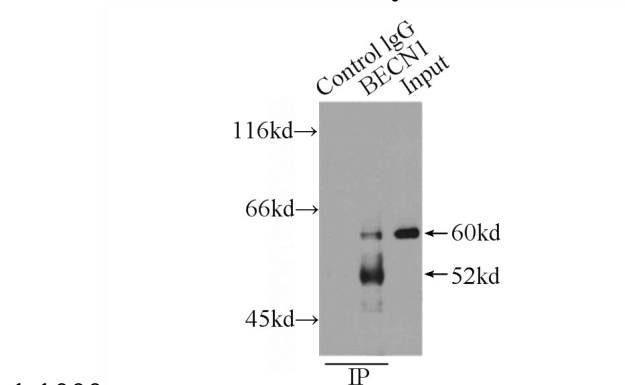
## Ig Type

Rabbit IgG

## Applications

ELISA, IHC, IP, WB, IF

## Dilutions



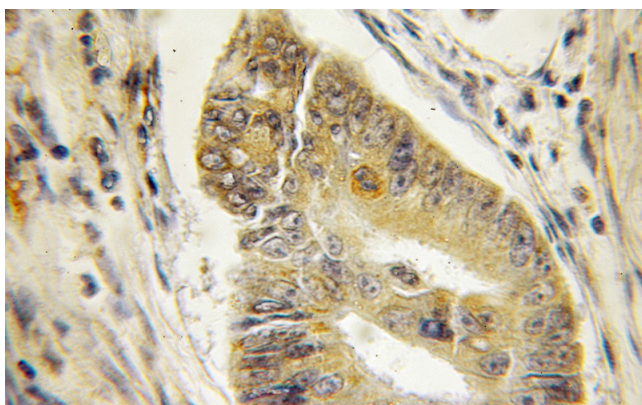
1:1000

IP Result of anti-Beclin 1 (IP:Catalog No:117114, 3ug; Detection:Catalog No:117114 1:500) with HeLa cells lysate 1200ug.

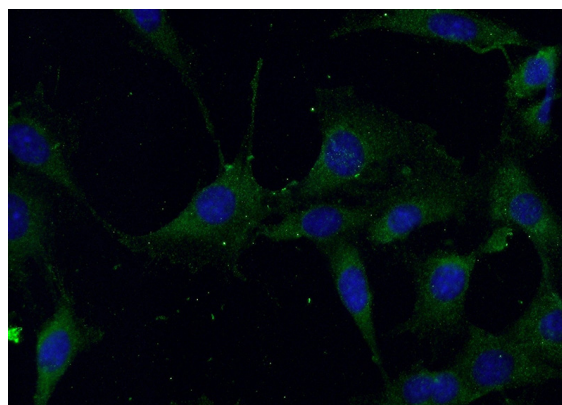
# Beclin 1 antibody

Catalog Number: 108441

---



Immunohistochemical of paraffin-embedded human colon cancer using Catalog No:117114(Beclin 1 antibody) at dilution of 1:50 (under 10x lens)



Immunofluorescent analysis of NIH/3T3 cells using Catalog No:117114(Beclin 1 Antibody) at dilution of 1:50 and Alexa Fluor 488-conjugated AffiniPure Goat Anti-Rabbit IgG(H+L)