

# BAP29 antibody

Catalog Number: 108420

## Product name

BAP29 antibody

IHC: 1:20-1:200

IF: 1:10-1:100

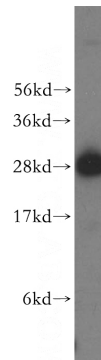
## Specificity

Human, Mouse, Rat; other species not tested.

## Antibody description

BAP29 Rabbit Polyclonal antibody. Positive FC detected in HEK-293 cells. Positive IHC detected in human lymphoma tissue. Positive IF detected in Hela cells. Positive WB detected in Raji cells, COLO 320 cells. Observed molecular weight by Western-blot: 28kd

## Validations



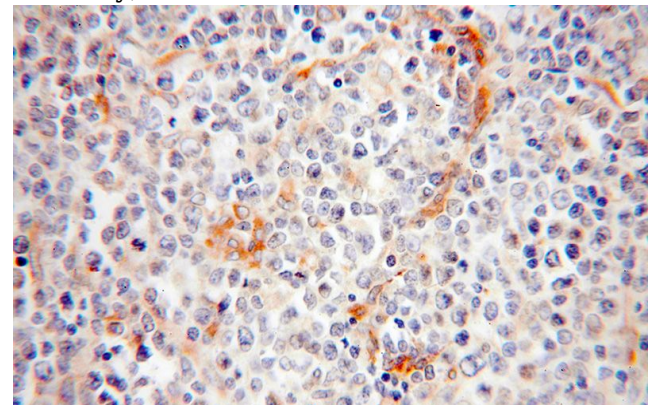
## Preparation

This antibody was obtained by immunization of BAP29 recombinant protein (Accession Number: NM\_001371354). Purification method: Antigen affinity purified.

Raji cells were subjected to SDS PAGE followed by western blot with Catalog No:108420(BCAP29 antibody) at dilution of 1:1000

## Formulation

PBS with 0.02% sodium azide and 50% glycerol pH 7.3.



## Storage

Store at -20°C. DO NOT ALIQUOT

## Clonality

Polyclonal

Immunohistochemical of paraffin-embedded human lymphoma using Catalog No:108420(BCAP29 antibody) at dilution of 1:200 (under 40x lens)

## Ig Type

Rabbit IgG

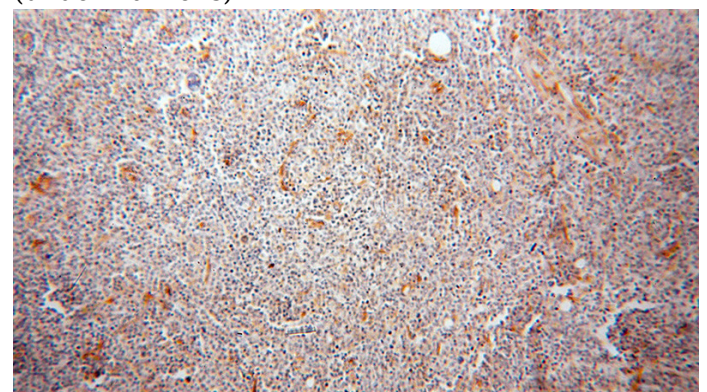
## Applications

ELISA, WB, IHC, IF, FC

## Dilutions

Recommended Dilution:

WB: 1:1000-1:10000



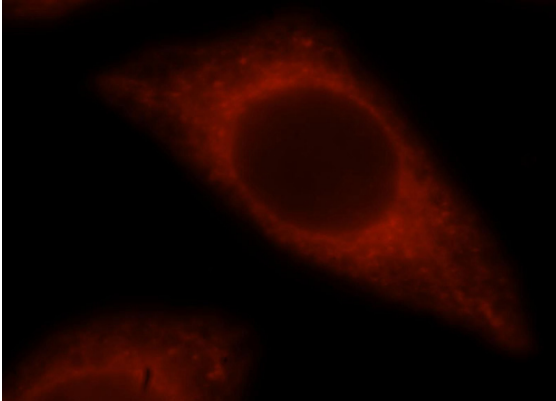
Immunohistochemical of paraffin-embedded

# BAP29 antibody

Catalog Number: 108420

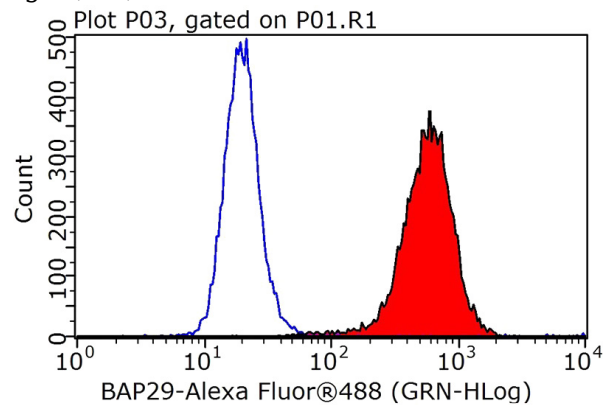
---

human lymphoma using Catalog  
No:108420(BCAP29 antibody) at dilution of 1:200  
(under 10x lens)



Immunofluorescent analysis of HeLa cells, using  
BCAP29 antibody Catalog No:108420 at 1:25  
dilution and Rhodamine-labeled goat anti-rabbit

IgG (red).



1X10<sup>6</sup> HEK-293 cells were stained with 0.2ug  
BCAP29 antibody (Catalog No:108420, red) and  
control antibody (blue). Fixed with 90% MeOH  
blocked with 3% BSA (30 min). FITC-Goat anti-  
Rabbit IgG with dilution 1:100.