

# BCL11B antibody

Catalog Number: 108390

## Product name

BCL11B antibody

## Specificity

Human, Mouse; other species not tested.

## Antibody description

BCL11B Rabbit Polyclonal antibody. Positive IF detected in SH-SY5Y cells. Positive IP detected in Jurkat cells. Positive WB detected in Jurkat cells, mouse thymus tissue. Observed molecular weight by Western-blot: 116 kDa

## Preparation

This antibody was obtained by immunization of Peptide (Accession Number: NM\_022898). Purification method: Antigen affinity purified.

## Formulation

PBS with 0.02% sodium azide and 50% glycerol pH 7.3.

## Storage

Store at -20°C. DO NOT ALIQUOT

## Clonality

Polyclonal

## Ig Type

Rabbit IgG

## Applications

ELISA, WB, IP, IF

## Dilutions

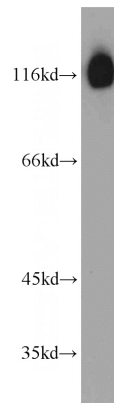
Recommended Dilution:

WB: 1:200-1:1000

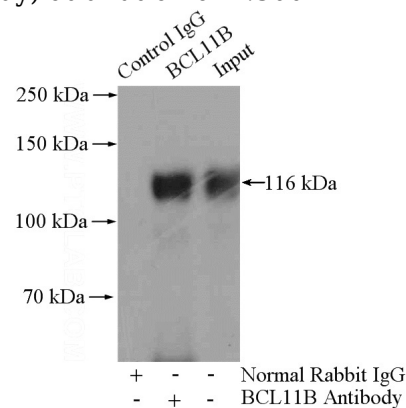
IP: 1:200-1:2000

IF: 1:20-1:200

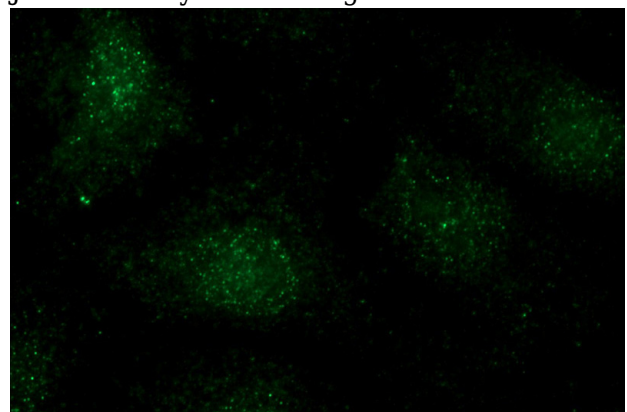
## Validations



Jurkat cells were subjected to SDS PAGE followed by western blot with Catalog No:108390(BCL11B antibody) at dilution of 1:300



IP Result of anti-BCL11B (IP:Catalog No:108390, 4ug; Detection:Catalog No:108390 1:500) with Jurkat cells lysate 2800ug.



Immunofluorescent analysis of (-20oc Ethanol) fixed SH-SY5Y cells using Catalog No:108390(BCL11B Antibody) at dilution of 1:50

# BCL11B antibody



Catalog Number: 108390

---

and Alexa Fluor 488-conjugated AffiniPure Goat Anti-Rabbit IgG(H+L)