

# BBX antibody

Catalog Number: 108378

## Product name

BBX antibody

WB: 1:500-1:5000

IP: 1:500-1:5000

## Specificity

Human, Mouse, Rat; other species not tested.

IHC: 1:20-1:200

## Antibody description

BBX Rabbit Polyclonal antibody. Positive IHC detected in human ovary tissue, human brain tissue, human lung tissue, human placenta tissue, human spleen tissue. Positive WB detected in HepG2 cells. Positive IP detected in HepG2 cells. Observed molecular weight by Western-blot: 105 kDa

## Validations



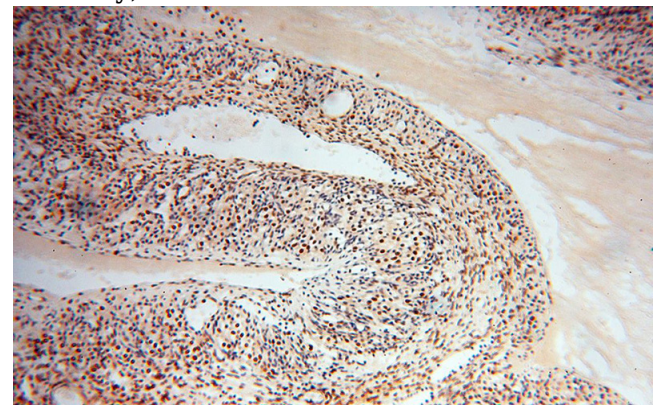
## Preparation

This antibody was obtained by immunization of BBX recombinant protein (Accession Number: BC012837). Purification method: Antigen affinity purified.

HepG2 cells were subjected to SDS PAGE followed by western blot with Catalog No:108378(BBX antibody) at dilution of 1:1500

## Formulation

PBS with 0.02% sodium azide and 50% glycerol pH 7.3.



## Storage

Store at -20°C. DO NOT ALIQUOT

## Clonality

Polyclonal

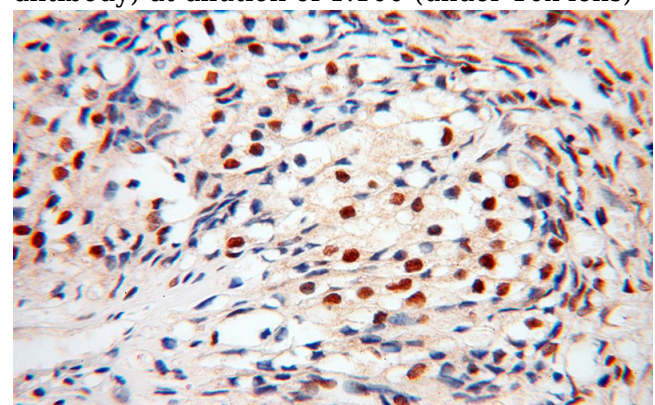
Immunohistochemical of paraffin-embedded human ovary using Catalog No:108378(BBX antibody) at dilution of 1:100 (under 10x lens)

## Ig Type

Rabbit IgG

## Applications

ELISA, WB, IHC, IP



## Dilutions

Recommended Dilution:

# BBX antibody

Catalog Number: 108378

---

Immunohistochemical of paraffin-embedded human ovary using Catalog No:108378(BBX antibody) at dilution of 1:100 (under 40x lens)

IP Result of anti-BBX (IP:Catalog No:108378, 4ug; Detection:Catalog No:108378 1:1000) with HepG2 cells lysate 2400ug.

