

# ATP1A2-Specific antibody



Catalog Number: 108343

## Product name

ATP1A2-Specific antibody

## Specificity

Human, Mouse; other species not tested.

## Antibody description

ATP1A2-Specific Rabbit Polyclonal antibody. Positive IHC detected in human skeletal muscle tissue, mouse heart tissue. Positive WB detected in mouse brain tissue, human brain tissue. Observed molecular weight by Western-blot: 100 kDa

## Preparation

This antibody was obtained by immunization of Peptide (Accession Number: NM\_000702). Purification method: Antigen affinity purified.

## Formulation

PBS with 0.02% sodium azide and 50% glycerol pH 7.3.

## Storage

Store at -20°C. DO NOT ALIQUOT

## Clonality

Polyclonal

## Ig Type

Rabbit IgG

## Applications

ELISA, WB, IHC

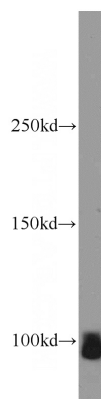
## Dilutions

Recommended Dilution:

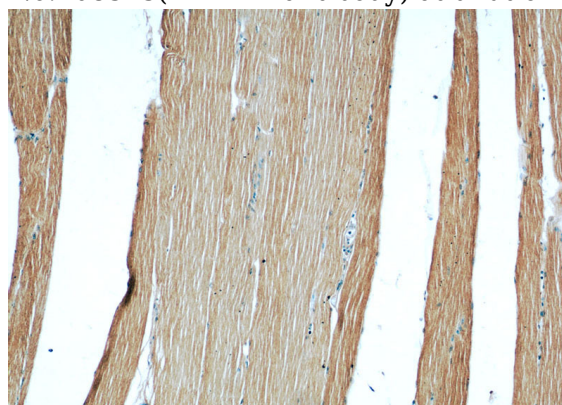
WB: 1:200-1:2000

IHC: 1:20-1:200

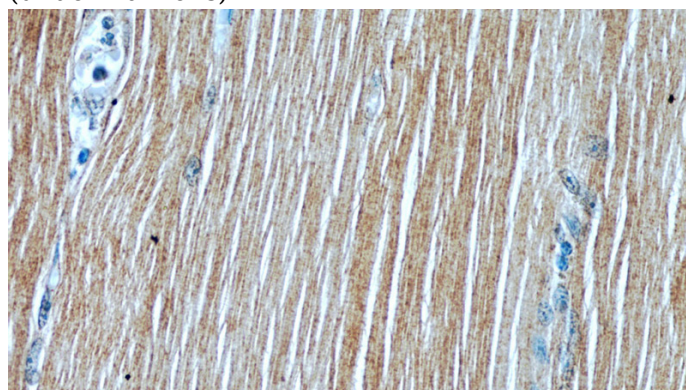
## Validations



mouse brain tissue were subjected to SDS PAGE followed by western blot with Catalog No:108343(ATP1A2 antibody) at dilution of 1:800



Immunohistochemical of paraffin-embedded human skeletal muscle using Catalog No:108343(ATP1A2 antibody) at dilution of 1:50 (under 10x lens)



Immunohistochemical of paraffin-embedded human skeletal muscle using Catalog No:108343(ATP1A2 antibody) at dilution of 1:50

# ATP1A2-Specific antibody



Catalog Number: 108343

---

(under 40x lens)