

ATP13A1 antibody

Catalog Number: 108339

Product name

ATP13A1 antibody

IP: 1:200-1:1000

IF: 1:20-1:200

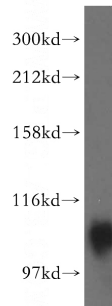
Specificity

Human, Mouse, Rat; other species not tested.

Validations

Antibody description

ATP13A1 Rabbit Polyclonal antibody. Positive WB detected in human liver tissue, HepG2 cells, mouse ovary tissue. Positive IP detected in HeLa cells. Positive IF detected in HepG2 cells. Observed molecular weight by Western-blot: 109 kDa



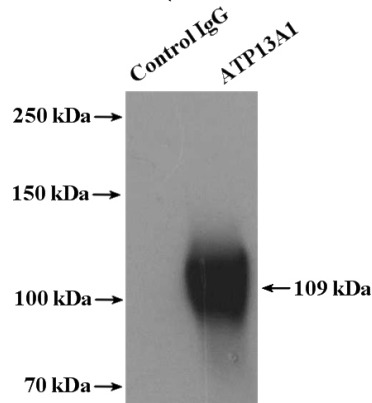
Preparation

This antibody was obtained by immunization of ATP13A1 recombinant protein (Accession Number: BC009302). Purification method: Antigen affinity purified.

human liver tissue were subjected to SDS PAGE followed by western blot with Catalog No:108339(ATP13A1 antibody) at dilution of 1:500

Formulation

PBS with 0.02% sodium azide and 50% glycerol pH 7.3.



Storage

Store at -20°C. DO NOT ALIQUOT

Clonality

Polyclonal

IP Result of anti-ATP13A1 (IP:Catalog No:108339, 4ug; Detection:Catalog No:108339 1:300) with HeLa cells lysate 4000ug.

Ig Type

Rabbit IgG

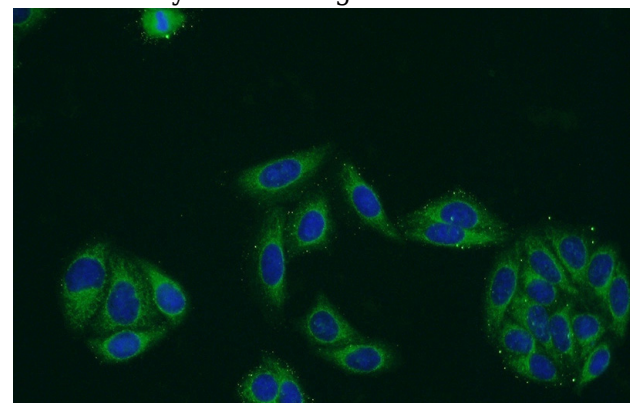
Applications

ELISA, WB, IF, IP

Dilutions

Recommended Dilution:

WB: 1:1000-1:10000



Immunofluorescent analysis of HepG2 cells using Catalog No:108339(ATP13A1 Antibody) at dilution

ATP13A1 antibody



Catalog Number: 108339

of 1:50 and Alexa Fluor 488-conjugated AffiniPure Goat Anti-Rabbit IgG(H+L)