

# ATP citrate lyase antibody



Catalog Number: 108336

## Product name

ATP citrate lyase antibody

IP: 1:500-1:5000

IF: 1:10-1:100

## Specificity

Human, Mouse, Rat; other species not tested.

## Antibody description

ATP citrate lyase Rabbit Polyclonal antibody. Positive IF detected in HepG2 cells. Positive FC detected in HepG2 cells. Positive WB detected in K-562 cells. Positive IP detected in K-562 cells. Observed molecular weight by Western-blot: 110-120kd

## Preparation

This antibody was obtained by immunization of ATP citrate lyase recombinant protein (Accession Number: XM\_005257395). Purification method: Antigen affinity purified.

## Formulation

PBS with 0.02% sodium azide and 50% glycerol pH 7.3.

## Storage

Store at -20°C. DO NOT ALIQUOT

## Clonality

Polyclonal

## Ig Type

Rabbit IgG

## Applications

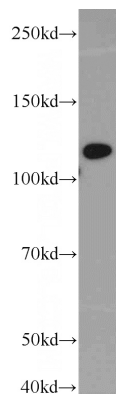
ELISA, WB, IF, FC, IP

## Dilutions

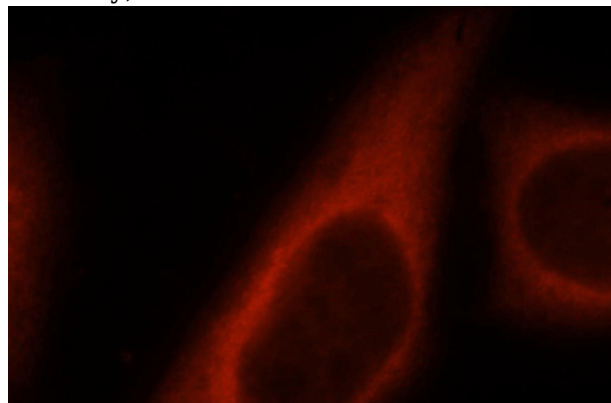
Recommended Dilution:

WB: 1:500-1:5000

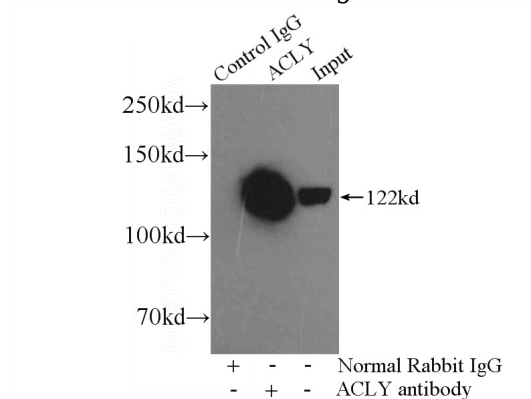
## Validations



K-562 cells were subjected to SDS PAGE followed by western blot with Catalog No:108336(ACLY antibody) at dilution of 1:1000



Immunofluorescent analysis of HepG2 cells, using ACLY antibody Catalog No:108336 at 1:25 dilution and Rhodamine-labeled goat anti-rabbit IgG (red).



IP Result of anti-ACLY (IP:Catalog No:108336, 4ug; Detection:Catalog No:108336 1:1000) with

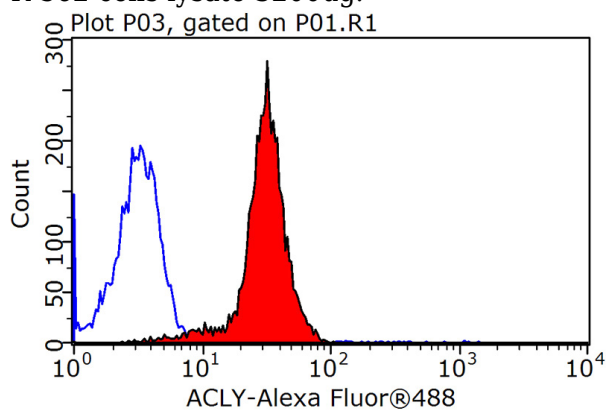
# ATP citrate lyase antibody



Catalog Number: 108336

---

K-562 cells lysate 3200ug.



1X10<sup>6</sup> HepG2 cells were stained with 0.2ug ACLY antibody (Catalog No:108336, red) and control antibody (blue). Fixed with 90% MeOH blocked with 3% BSA (30 min). Alexa Fluor 488-conjugated AffiniPure Goat Anti-Rabbit IgG(H+L) with dilution 1:1500.