

ATP6V1A antibody



Catalog Number: 108304

Product name

ATP6V1A antibody

Specificity

Human, Mouse; other species not tested.

Antibody description

ATP6V1A Rabbit Polyclonal antibody. Positive WB detected in HeLa cells, HEK-293 cells, human brain tissue, mouse kidney tissue. Positive IHC detected in human testis tissue. Observed molecular weight by Western-blot: 68 kDa

Preparation

This antibody was obtained by immunization of Peptide (Accession Number: NM_001690). Purification method: Antigen affinity purified.

Formulation

PBS with 0.1% sodium azide and 50% glycerol pH 7.3.

Storage

Store at -20°C. DO NOT ALIQUOT

Clonality

Polyclonal

Ig Type

Rabbit IgG

Applications

ELISA, WB, IHC

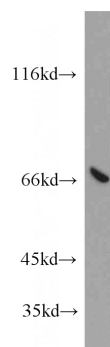
Dilutions

Recommended Dilution:

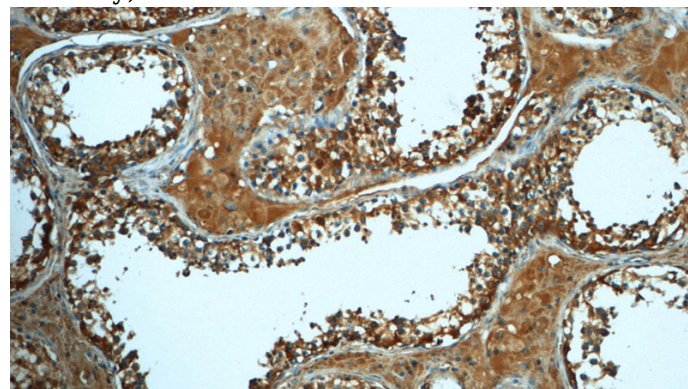
WB: 1:200-1:2000

IHC: 1:20-1:200

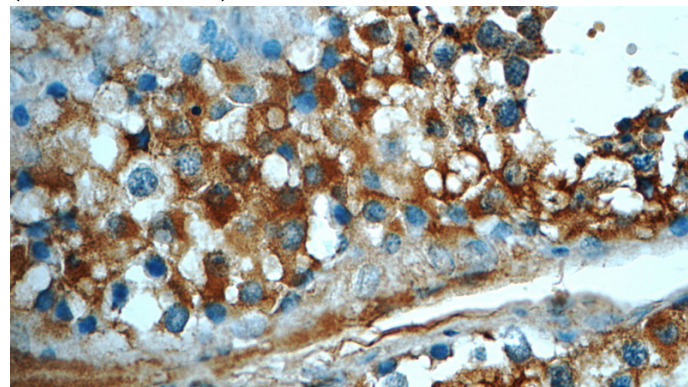
Validations



HeLa cells were subjected to SDS PAGE followed by western blot with Catalog No:108304(ATP6V1A antibody) at dilution of 1:500



Immunohistochemistry of paraffin-embedded human testis tissue slide using Catalog No:108304(ATP6V1A Antibody) at dilution of 1:50 (under 10x lens)



Immunohistochemistry of paraffin-embedded human testis tissue slide using Catalog No:108304(ATP6V1A Antibody) at dilution of 1:50 (under 40x lens)