

ARFIP2 antibody



Catalog Number: 108254

Product name

ARFIP2 antibody

Immunogen

[Human ARFIP2 Recombinant protein \(His tag\)](#)

Specificity

Human, Mouse, Rat; other species not tested.

Antibody description

ARFIP2 Rabbit Polyclonal antibody. Positive IF detected in HeLa cells, HepG2 cells. Positive IHC detected in human liver tissue, human pancreas tissue. Positive WB detected in HeLa cells, human brain tissue, human heart tissue, human liver tissue, mouse pancreas tissue. Observed molecular weight by Western-blot: 38 kDa; 45 kDa

Preparation

This antibody was obtained by immunization of ARFIP2 recombinant protein (Accession Number: NM_001376558). Purification method: Antigen affinity purified.

Formulation

PBS with 0.02% sodium azide and 50% glycerol pH 7.3.

Storage

Store at -20°C. DO NOT ALIQUOT

Clonality

Polyclonal

Ig Type

Rabbit IgG

Applications

ELISA, WB, IF, IHC

Dilutions

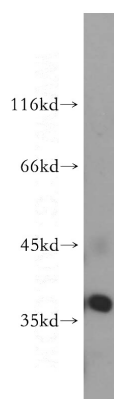
Recommended Dilution:

WB: 1:1000-1:10000

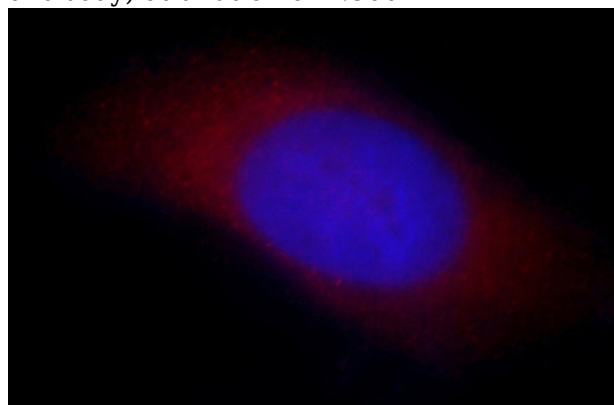
IHC: 1:20-1:200

IF: 1:10-1:100

Validations



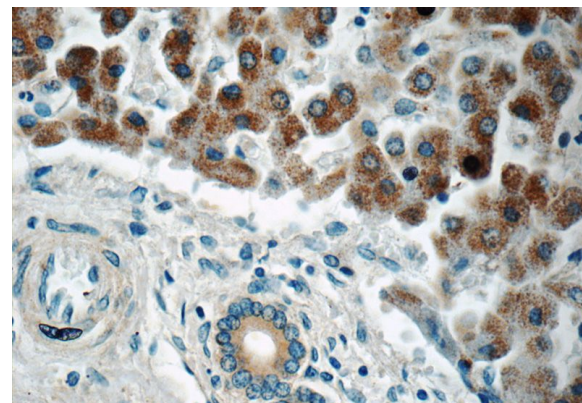
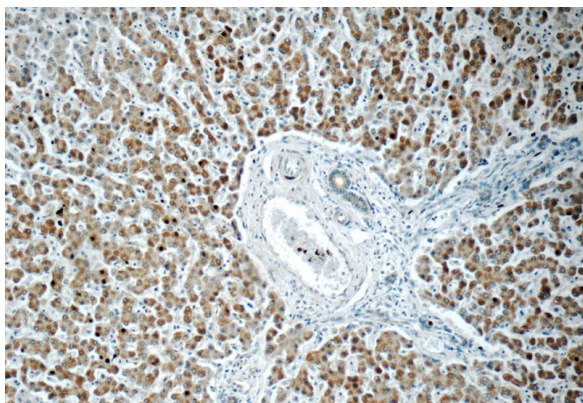
HeLa cells were subjected to SDS PAGE followed by western blot with Catalog No:108254(ARFIP2 antibody) at dilution of 1:500



Immunofluorescent analysis of HeLa cells, using ARFIP2 antibody Catalog No:108254 at 1:25 dilution and Rhodamine-labeled goat anti-rabbit IgG (red). Blue pseudocolor = DAPI (fluorescent DNA dye).

ARFIP2 antibody

Catalog Number: 108254



Immunohistochemistry of paraffin-embedded human liver tissue slide using Catalog No:108254(ARFIP2 Antibody) at dilution of 1:50 (under 10x lens)

Immunohistochemistry of paraffin-embedded human liver tissue slide using Catalog No:108254(ARFIP2 Antibody) at dilution of 1:50 (under 40x lens)