

# ARFGAP1 antibody



Catalog Number: 108250

## Product name

ARFGAP1 antibody

IP: 1:200-1:2000

IHC: 1:20-1:200

## Specificity

Human, Mouse, Rat; other species not tested.

## Antibody description

ARFGAP1 Rabbit Polyclonal antibody. Positive IHC detected in human prostate cancer tissue. Positive IP detected in mouse testis tissue. Positive WB detected in PC-3 cells, HeLa cells, human brain tissue. Observed molecular weight by Western-blot: 46kd, 50k

## Preparation

This antibody was obtained by immunization of ARFGAP1 recombinant protein (Accession Number: NM\_175609). Purification method: Antigen affinity purified.

## Formulation

PBS with 0.02% sodium azide and 50% glycerol pH 7.3.

## Storage

Store at -20°C. DO NOT ALIQUOT

## Clonality

Polyclonal

## Ig Type

Rabbit IgG

## Applications

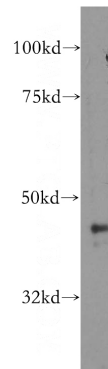
ELISA, WB, IHC, IP

## Dilutions

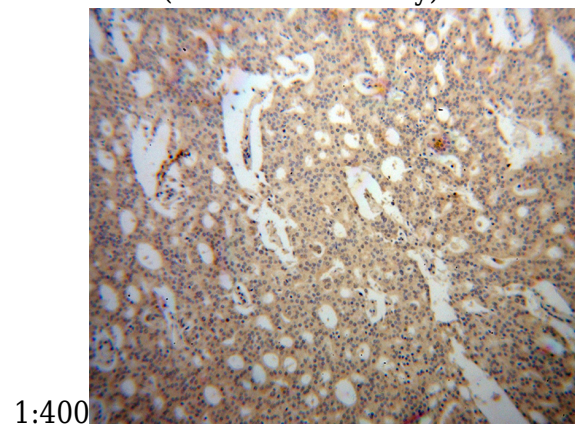
Recommended Dilution:

WB: 1:500-1:5000

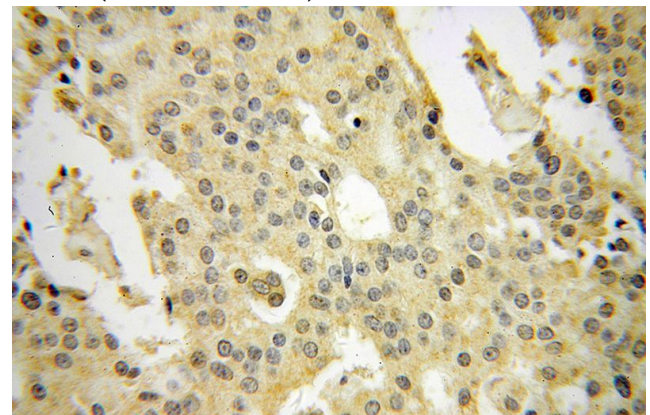
## Validations



PC-3 cells were subjected to SDS PAGE followed by western blot with Catalog No:108250(ARFGAP1 antibody) at dilution of



Immunohistochemical of paraffin-embedded human prostate cancer using Catalog No:108250(ARFGAP1 antibody) at dilution of 1:100 (under 10x lens)

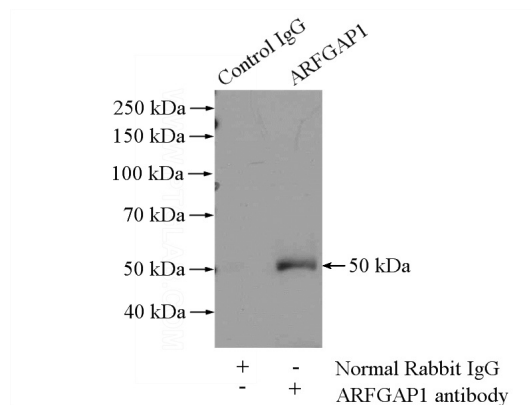


# ARFGAP1 antibody

Catalog Number: 108250

---

Immunohistochemical of paraffin-embedded human prostate cancer using Catalog No:108250(ARFGAP1 antibody) at dilution of 1:100 (under 40x lens)



IP Result of anti-ARFGAP1 (IP:Catalog No:108250, 4ug; Detection:Catalog No:108250 1:500) with mouse testis tissue lysate 4000ug.