

ARF6-Specific antibody

Catalog Number: 108249

Product name

ARF6-Specific antibody

IHC: 1:20-1:200

IF: N/A

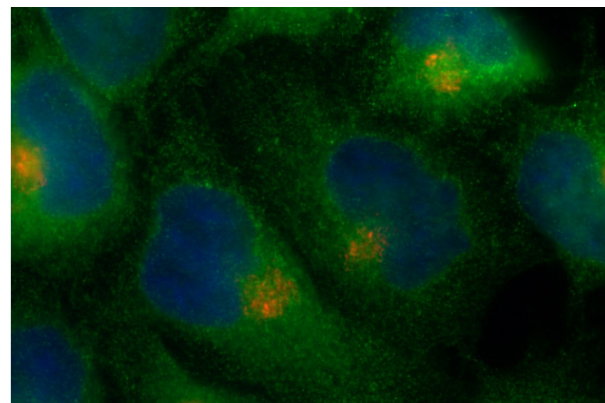
Specificity

Human, Mouse, Rat; other species not tested.

Validations

Antibody description

ARF6-Specific Rabbit Polyclonal antibody. Positive IHC detected in human kidney tissue, human heart tissue. Positive IF detected in HeLa. Positive WB detected in human liver tissue, A549 cells. Observed molecular weight by Western-blot: 20 kDa



Preparation

This antibody was obtained by immunization of Peptide (Accession Number: NM_001663). Purification method: Antigen affinity purified.

IF result of ARF6 antibody (Catalog No:108249, 1:100) with PFA fixed HeLa cells. Green: ARF6 antibody stains PM and recycling endosomes. Red:

Formulation

PBS with 0.02% sodium azide and 50% glycerol pH 7.3.

Storage

Store at -20°C. DO NOT ALIQUOT

Clonality

Polyclonal

Ig Type

Rabbit IgG

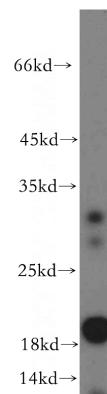
Applications

ELISA, WB, IHC, IF

Dilutions

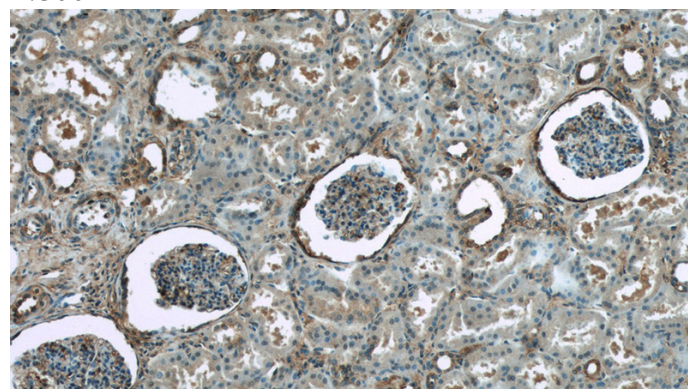
Recommended Dilution:

WB: 1:500-1:5000



Golgi stain.

human liver tissue were subjected to SDS PAGE followed by western blot with Catalog No:108249(ARF6-Specific antibody) at dilution of 1:300

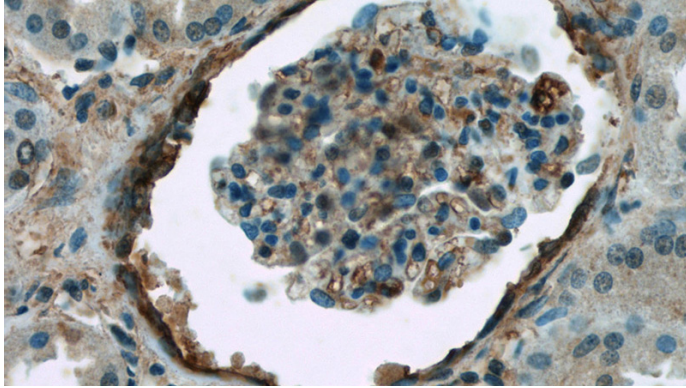


Immunohistochemistry of paraffin-embedded

ARF6-Specific antibody

Catalog Number: 108249

human kidney tissue slide using Catalog No:108249(ARF6-Specific Antibody) at dilution of 1:50 (under 10x lens)



Immunohistochemistry of paraffin-embedded human kidney tissue slide using Catalog No:108249(ARF6-Specific Antibody) at dilution of 1:50 (under 40x lens)