

ARF1 antibody

Catalog Number: 108243

Product name

ARF1 antibody

IP: 1:200-1:2000

IHC: 1:20-1:200

Specificity

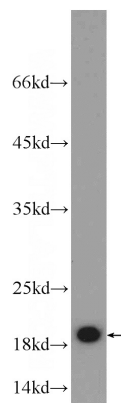
Human, Mouse; other species not tested.

IF: 1:10-1:100

Antibody description

ARF1 Rabbit Polyclonal antibody. Positive IHC detected in human brain tissue. Positive IF detected in HepG2 cells. Positive WB detected in HeLa cells, HEK-293 cells, HepG2 cells, mouse brain tissue. Positive IP detected in HeLa cells. Observed molecular weight by Western-blot: 18-21 kDa

Validations



Preparation

This antibody was obtained by immunization of Peptide (Accession Number: NM_001658). Purification method: Antigen affinity purified.

HeLa cells were subjected to SDS PAGE followed by western blot with Catalog No:108243(ARF1 antibody) at dilution of 1:1000

Formulation

PBS with 0.02% sodium azide and 50% glycerol pH 7.3.

Storage

Store at -20°C. DO NOT ALIQUOT

Clonality

Polyclonal

Ig Type

Rabbit IgG

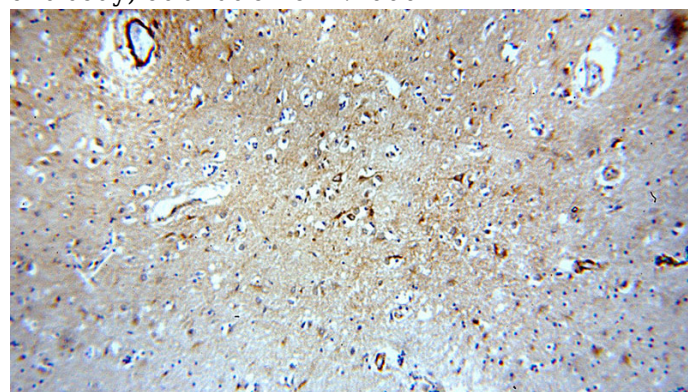
Applications

ELISA, WB, IF, IHC, IP

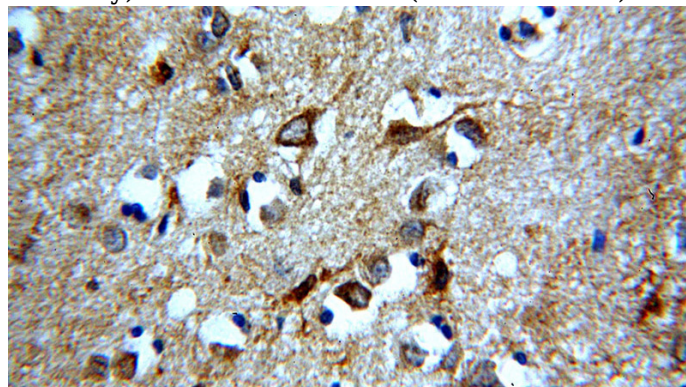
Dilutions

Recommended Dilution:

WB: 1:500-1:5000



Immunohistochemical of paraffin-embedded human brain using Catalog No:108243(ARF1 antibody) at dilution of 1:100 (under 10x lens)

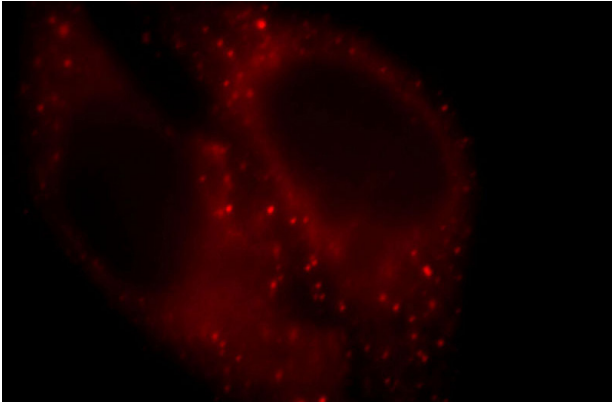


Immunohistochemical of paraffin-embedded

ARF1 antibody

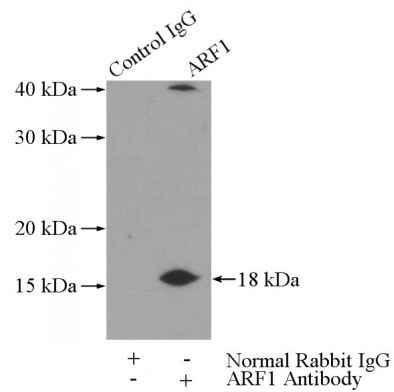
Catalog Number: 108243

human brain using Catalog No:108243(ARF1 antibody) at dilution of 1:100 (under 40x lens)



Immunofluorescent analysis of HepG2 cells, using ARF1 antibody Catalog No:108243 at 1:25 dilution

and Rhodamine-labeled goat anti-rabbit IgG (red).



IP Result of anti-ARF1 (IP:Catalog No:108243, 3ug; Detection:Catalog No:108243 1:600) with HeLa cells lysate 2440ug.