

# ARF1 antibody



Catalog Number: 108242

## Product name

ARF1 antibody

## Immunogen

[Human ARF1 Recombinant protein \(GST tag\)](#)

## Specificity

Human, Mouse, Rat, Monkey; other species not tested.

## Antibody description

ARF1 Rabbit Polyclonal antibody. Positive IHC detected in human small intestine tissue, human lung cancer tissue, human stomach cancer tissue. Positive WB detected in HeLa cells, COS-7 cells, HEK-293 cells, mouse brain tissue. Observed molecular weight by Western-blot: 21 kDa

## Preparation

This antibody was obtained by immunization of ARF1 recombinant protein (Accession Number: NM\_001658). Purification method: Antigen affinity purified.

## Formulation

PBS with 0.1% sodium azide and 50% glycerol pH 7.3.

## Storage

Store at -20°C. DO NOT ALIQUOT

## Clonality

Polyclonal

## Ig Type

Rabbit IgG

## Applications

ELISA, WB, IHC

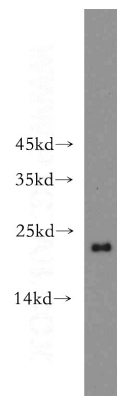
## Dilutions

Recommended Dilution:

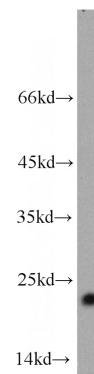
WB: 1:200-1:2000

IHC: 1:20-1:200

## Validations

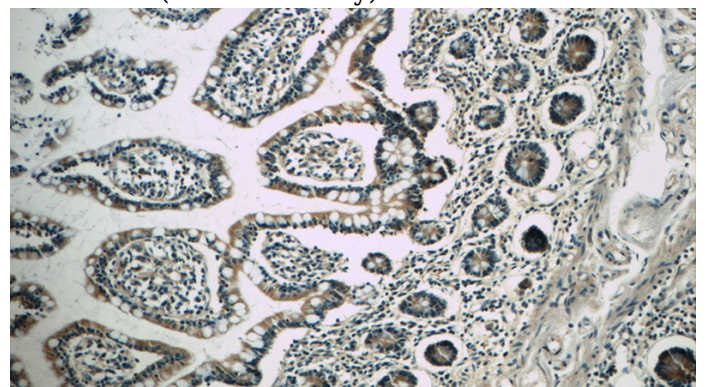


HeLa cells were subjected to SDS PAGE followed by western blot with Catalog No:108242(ARF1



antibody) at dilution of 1:500

mouse brain tissue were subjected to SDS PAGE followed by western blot with Catalog No:108242(ARF1 antibody) at dilution of 1:500

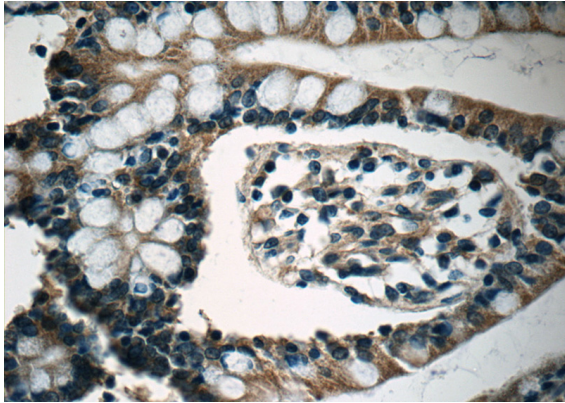


# ARF1 antibody

Catalog Number: 108242

---

Immunohistochemistry of paraffin-embedded human small intestine tissue slide using Catalog No:108242(ARF1 Antibody) at dilution of 1:50 (under 10x lens)



Immunohistochemistry of paraffin-embedded human small intestine tissue slide using Catalog No:108242(ARF1 Antibody) at dilution of 1:50 (under 40x lens)