

# ASF/SF2 antibody



Catalog Number: 108221

## General Information

### Product name:

ASF/SF2 antibody

### Immunogen:

### Applications:

ELISA, WB, IP

### Specificity:

Human, Mouse, Rat; other species not tested.

### Antibody description:

ASF/SF2 Rabbit Polyclonal antibody. Positive IP detected in mouse brain tissue. Positive WB detected in human brain tissue, HeLa cells, human ileum tissue, human placenta tissue, mouse brain tissue. Observed molecular weight by Western-blot: 28kd

## Properties

### Preparation:

This antibody was obtained by immunization of ASF/SF2 recombinant protein (Accession Number: BC010264). Purification method: Antigen affinity purified.

### Formulation:

PBS with 0.1% sodium azide and 50% glycerol pH 7.3.

### Storage:

Store at -20°C. DO NOT ALIQUOT

### Clonality:

Polyclonal

**Ig Type:** Rabbit IgG

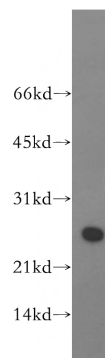
## Applications

Recommended Dilution:

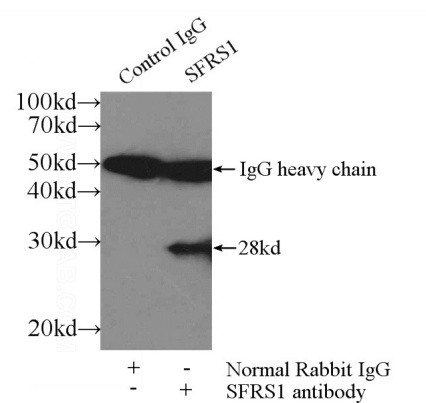
WB: 1:500-1:5000

IP: 1:200-1:2000

## Validations



human brain tissue were subjected to SDS PAGE followed by western blot with Catalog No:108221(ASF/SF2 antibody) at dilution of 1:1000



IP Result of anti-ASF/SF2 (IP:Catalog No:108221, 3ug; Detection:Catalog No:108221 1:500) with mouse brain tissue lysate 3600ug.