

# ARL3 antibody

Catalog Number: 108200

## Product name

ARL3 antibody

WB: 1:500-1:5000

IHC: 1:20-1:200

## Specificity

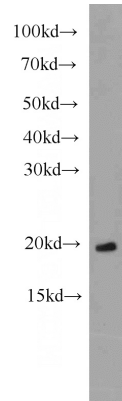
Human, Mouse, Rat; other species not tested.

IF: 1:20-1:200

## Antibody description

ARL3 Rabbit Polyclonal antibody. Positive WB detected in HeLa cells, human brain tissue, mouse brain tissue, mouse testis tissue, PC-3 cells, rat brain tissue. Positive IF detected in IMCD3 cells. Positive IHC detected in human testis tissue, human prostate cancer tissue. Observed molecular weight by Western-blot: 20 kDa

## Validations



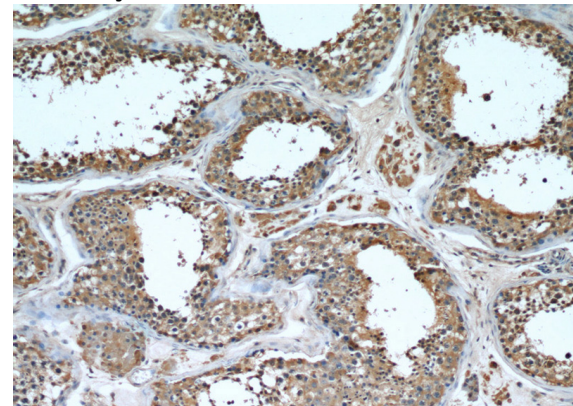
## Preparation

This antibody was obtained by immunization of ARL3 recombinant protein (Accession Number: XM\_017016260). Purification method: Antigen affinity purified.

HeLa cells were subjected to SDS PAGE followed by western blot with Catalog No:108200(ARL3 antibody) at dilution of 1:1000

## Formulation

PBS with 0.1% sodium azide and 50% glycerol pH 7.3.



## Storage

Store at -20°C. DO NOT ALIQUOT

## Clonality

Polyclonal

Immunohistochemical of paraffin-embedded human testis using Catalog No:108200(ARL3 antibody) at dilution of 1:50 (under 10x lens)

## Ig Type

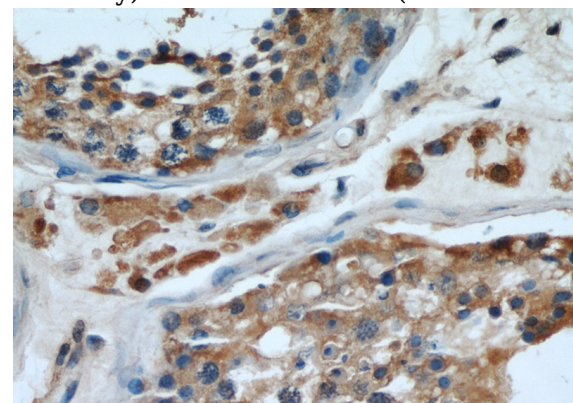
Rabbit IgG

## Applications

ELISA, WB, IHC, IF

## Dilutions

Recommended Dilution:

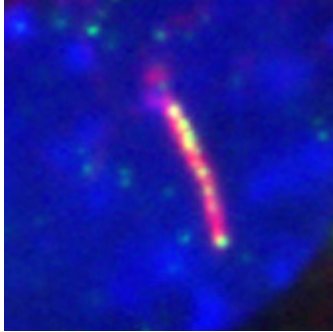


# ARL3 antibody

Catalog Number: 108200

---

Immunohistochemical of paraffin-embedded human testis using Catalog No:108200(ARL3 antibody) at dilution of 1:50 (under 40x lens)



IF result of Catalog No:108200 (anti-ARL3,Green) in ciliated IMCD3 cells by Dr. Seongjin Seo. (Red is the primary cilium, and blue is the nucleus)