

ARL2 antibody

Catalog Number: 108198

Product name

ARL2 antibody

Specificity

Human, Mouse, Rat; other species not tested.

Antibody description

ARL2 Rabbit Polyclonal antibody. Positive IHC detected in human ovary tumor tissue. Positive WB detected in mouse liver tissue, HeLa cells, mouse lung tissue, mouse spleen tissue, Y79 cells. Observed molecular weight by Western-blot: 21-25 kDa

Preparation

This antibody was obtained by immunization of ARL2 recombinant protein (Accession Number: NM_001667). Purification method: Antigen affinity purified.

Formulation

PBS with 0.1% sodium azide and 50% glycerol pH 7.3.

Storage

Store at -20°C. DO NOT ALIQUOT

Clonality

Polyclonal

Ig Type

Rabbit IgG

Applications

ELISA, WB, IHC

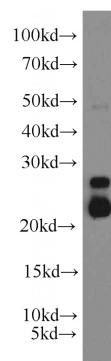
Dilutions

Recommended Dilution:

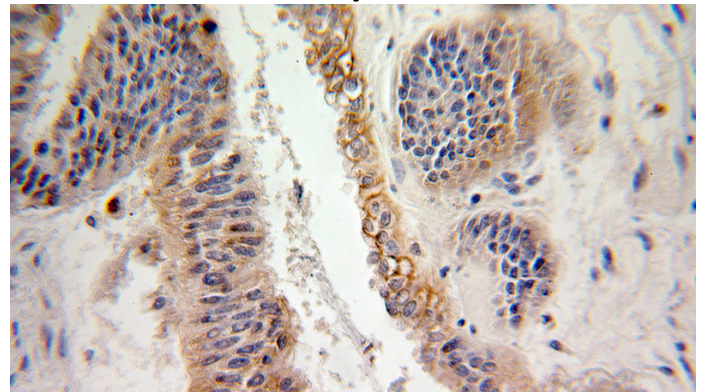
WB: 1:500-1:5000

IHC: 1:20-1:200

Validations



mouse liver tissue were subjected to SDS PAGE followed by western blot with Catalog No:108198(ARL2 antibody) at dilution of 1:500



Immunohistochemical of paraffin-embedded human ovary tumor using Catalog No:108198(ARL2 antibody) at dilution of 1:100 (under 25x lens)