

ARHGEF7 antibody

Catalog Number: 108189

Product name

ARHGEF7 antibody

IP: 1:500-1:5000

IF: 1:10-1:100

Specificity

Human, Mouse, Rat; other species not tested.

Antibody description

ARHGEF7 Rabbit Polyclonal antibody. Positive WB detected in NIH/3T3 cells, HeLa cells, Jurkat cells, K-562 cells, mouse skeletal muscle tissue. Positive IP detected in HeLa cells. Positive IF detected in HeLa cells. Observed molecular weight by Western-blot: 70 kDa

Preparation

This antibody was obtained by immunization of ARHGEF7 recombinant protein (Accession Number: NM_001113511). Purification method: Antigen affinity purified.

Formulation

PBS with 0.02% sodium azide and 50% glycerol pH 7.3.

Storage

Store at -20°C. DO NOT ALIQUOT

Clonality

Polyclonal

Ig Type

Rabbit IgG

Applications

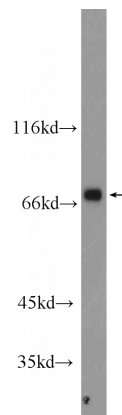
ELISA, IP, WB, IF

Dilutions

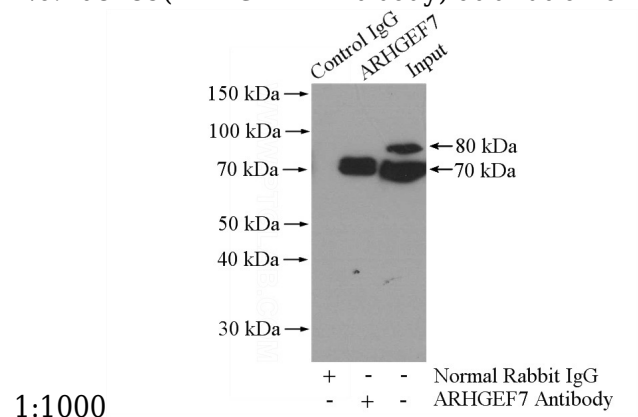
Recommended Dilution:

WB: 1:500-1:5000

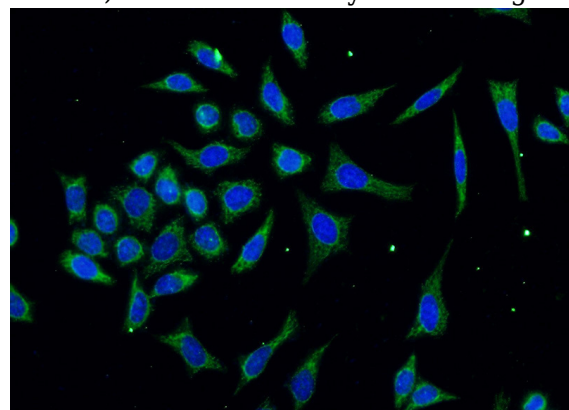
Validations



NIH/3T3 cells were subjected to SDS PAGE followed by western blot with Catalog No:108189 (ARHGEF7 Antibody) at dilution of



1:1000 IP Result of anti-ARHGEF7 (IP: Catalog No:108189, 4ug; Detection: Catalog No:108189 1:1000) with HeLa cells lysate 1200ug.



Immunofluorescent analysis of (-20°C Ethanol)

ARHGEF7 antibody



Catalog Number: 108189

fixed HeLa cells using Catalog No:108189(ARHGEF7 Antibody) at dilution of 1:25 and Alexa Fluor 488-conjugated AffiniPure Goat Anti-Rabbit IgG(H+L)