

# ARHGEF10 antibody

Catalog Number: 108183

---

**Product name**

Polyclonal

ARHGEF10 antibody

**Ig Type****Specificity**

Rabbit IgG

Human, Mouse, Rat; other species not tested.

**Applications****Antibody description**

ELISA, IHC

ARHGEF10 Rabbit Polyclonal antibody. Positive IHC detected in human lung cancer tissue. Observed molecular weight by Western-blot: 68kd, 75kd, 148-152kd

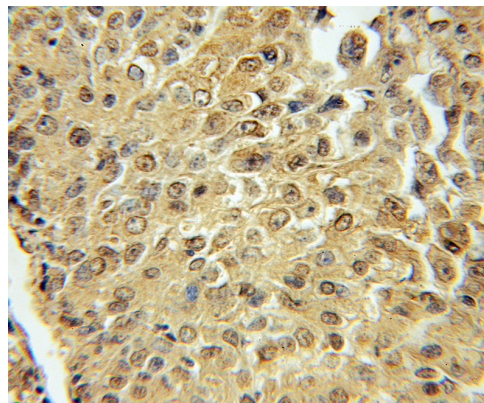
**Dilutions**

Recommended Dilution:

IHC: 1:20-1:200

**Preparation**

This antibody was obtained by immunization of ARHGEF10 recombinant protein (Accession Number: BC036809). Purification method: Antigen affinity purified.

**Validations****Formulation**

PBS with 0.1% sodium azide and 50% glycerol pH 7.3.

**Storage**

Store at -20°C. DO NOT ALIQUOT

Immunohistochemical of paraffin-embedded human lung cancer using Catalog No:108183 (ARHGEF10 antibody) at dilution of 1:50 (under 10x lens)

**Clonality**