

ARHGEF1 antibody



Catalog Number: 108182

Product name

ARHGEF1 antibody

WB: 1:500-1:5000

IP: 1:500-1:5000

Specificity

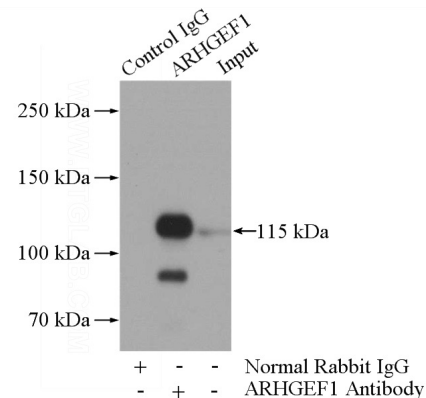
Human, Mouse; other species not tested.

IHC: 1:20-1:200

Antibody description

ARHGEF1 Rabbit Polyclonal antibody. Positive IHC detected in human colon tissue. Positive IP detected in HEK-293 cells. Positive WB detected in HEK-293 cells, HeLa cells, human brain tissue, human spleen tissue, Jurkat cells, K-562 cells, mouse spleen tissue. Observed molecular weight by Western-blot: 102-110 kDa

Validations



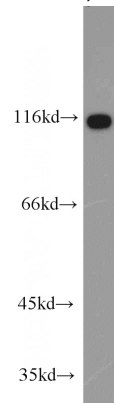
Preparation

This antibody was obtained by immunization of ARHGEF1 recombinant protein (Accession Number: NM_198977). Purification method: Antigen affinity purified.

IP Result of anti-ARHGEF1 (IP:Catalog No:108182, 4ug; Detection:Catalog No:108182 1:1000) with HEK-293 cells lysate 2800ug.

Formulation

PBS with 0.1% sodium azide and 50% glycerol pH 7.3.



Storage

Store at -20°C. DO NOT ALIQUOT

HEK-293 cells were subjected to SDS PAGE followed by western blot with Catalog No:108182(ARHGEF1 antibody) at dilution of 1:1000

Clonality

Polyclonal

Ig Type

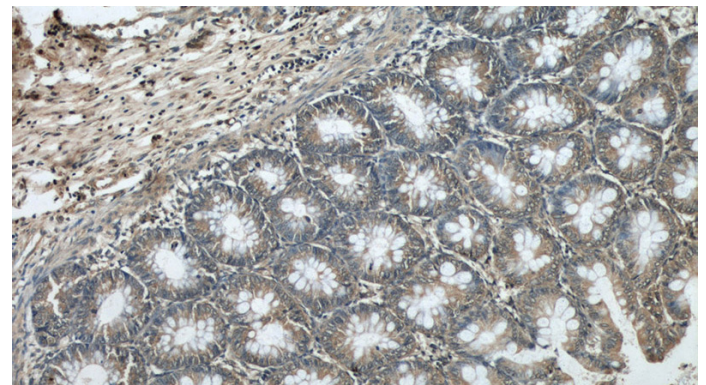
Rabbit IgG

Applications

ELISA, IHC, WB, IP

Dilutions

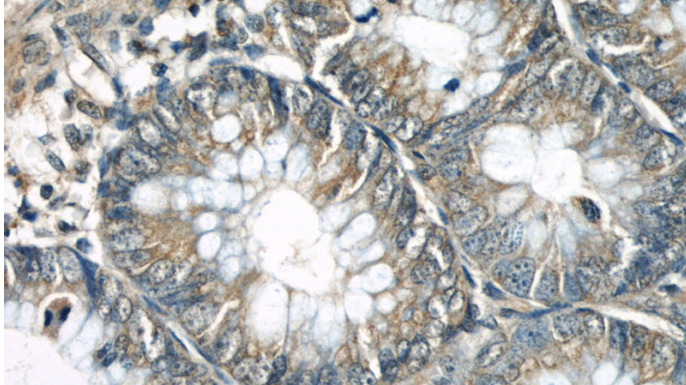
Recommended Dilution:



ARHGEF1 antibody

Catalog Number: 108182

Immunohistochemical of paraffin-embedded human colon using Catalog No:108182(ARHGEF1 antibody) at dilution of 1:50 (under 10x lens)



Immunohistochemical of paraffin-embedded human colon using Catalog No:108182(ARHGEF1 antibody) at dilution of 1:50 (under 40x lens)