

## Product name

ARSB antibody

## Specificity

Human, Mouse, Rat; other species not tested.

## Antibody description

ARSB Rabbit Polyclonal antibody. Positive IHC detected in human placenta tissue, human breast cancer tissue, human heart tissue. Positive WB detected in HepG2 cells. Observed molecular weight by Western-blot: 44kd

## Preparation

This antibody was obtained by immunization of ARSB recombinant protein (Accession Number: NM\_198709). Purification method: Antigen affinity purified.

## Formulation

PBS with 0.02% sodium azide and 50% glycerol pH 7.3.

## Storage

Store at -20°C. DO NOT ALIQUOT

## Clonality

Polyclonal

## Ig Type

Rabbit IgG

## Applications

ELISA, WB, IHC

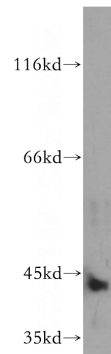
## Dilutions

Recommended Dilution:

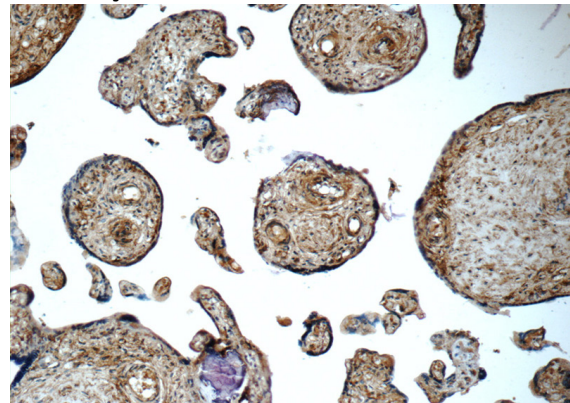
WB: 1:200-1:2000

IHC: 1:20-1:200

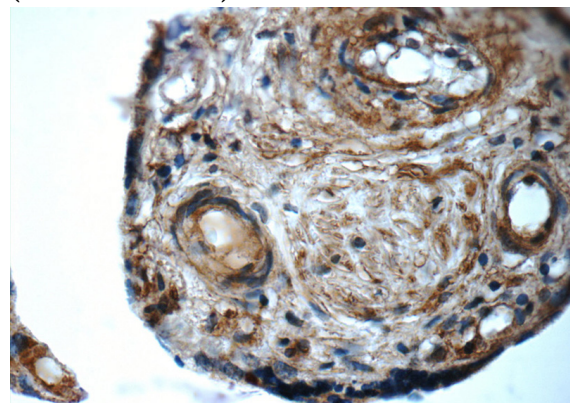
## Validations



HepG2 cells were subjected to SDS PAGE followed by western blot with Catalog No:108175(ARSB antibody) at dilution of 1:300



Immunohistochemistry of paraffin-embedded human placenta tissue slide using Catalog No:108175(ARSB Antibody) at dilution of 1:50 (under 10x lens)



Immunohistochemistry of paraffin-embedded human placenta tissue slide using Catalog

# ARSB antibody



Catalog Number: 108175

---

No:108175(ARSB Antibody) at dilution of 1:50 (under 40x lens)