

APEX1 antibody

Catalog Number: 108138

Product name

APEX1 antibody

Immunogen

[Human APEX1 Recombinant protein \(GST tag\)](#)

Specificity

Human, Mouse, Rat; other species not tested.

Antibody description

APEX1 Rabbit Polyclonal antibody. Positive IHC detected in human cervical cancer tissue. Positive IF detected in HepG2 cells. Positive WB detected in HepG2 cells, HEK-293 cells, K-562 cells, mouse liver tissue, Raji cells. Observed molecular weight by Western-blot: 36 kDa

Preparation

This antibody was obtained by immunization of APEX1 recombinant protein (Accession Number: NM_001244249). Purification method: Antigen affinity purified.

Formulation

PBS with 0.1% sodium azide and 50% glycerol pH 7.3.

Storage

Store at -20°C. DO NOT ALIQUOT

Clonality

Polyclonal

Ig Type

Rabbit IgG

Applications

ELISA, WB, IHC, IF

Dilutions

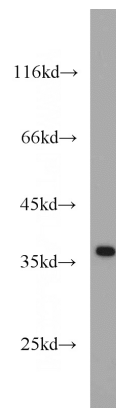
Recommended Dilution:

WB: 1:200-1:2000

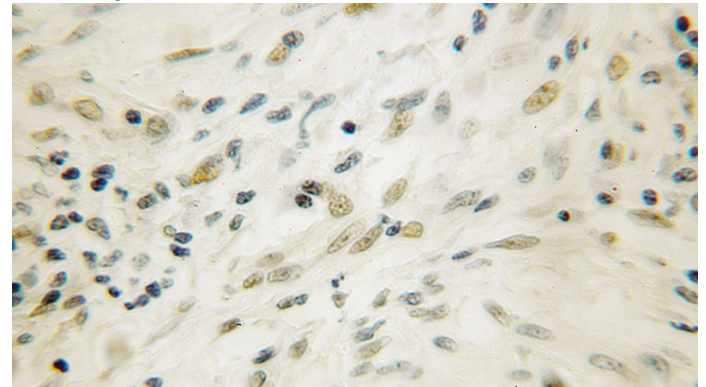
IHC: 1:20-1:200

IF: 1:20-1:200

Validations



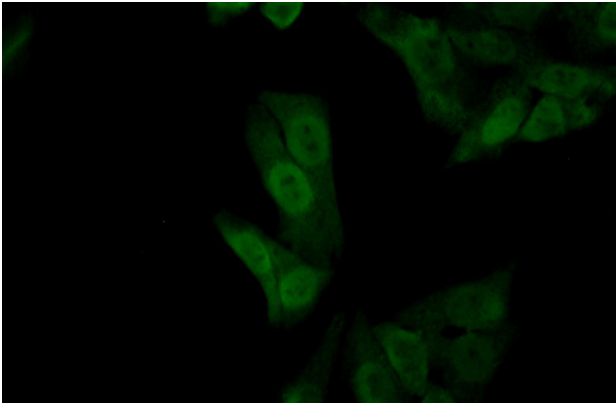
HepG2 cells were subjected to SDS PAGE followed by western blot with Catalog No:108138(APEX1 antibody) at dilution of 1:500



Immunohistochemical of paraffin-embedded human cervical cancer using Catalog No:108138(APEX1 antibody) at dilution of 1:50 (under 10x lens)

APEX1 antibody

Catalog Number: 108138



Immunofluorescent analysis of HepG2 cells using Catalog No:108138(APEX1 Antibody) at dilution of 1:50 and Alexa Fluor 488-conjugated AffiniPure Goat Anti-Rabbit IgG(H+L)