

# ANP32A antibody



Catalog Number: 108104

## Product name

ANP32A antibody

IHC: 1:20-1:200

IF: 1:10-1:100

## Specificity

Human, Mouse, Rat; other species not tested.

## Antibody description

ANP32A Rabbit Polyclonal antibody. Positive WB detected in human brain tissue, HeLa cells. Positive IHC detected in human kidney tissue. Positive IF detected in A2780 cells. Observed molecular weight by Western-blot: 29 kDa

## Preparation

This antibody was obtained by immunization of ANP32A recombinant protein (Accession Number: NM\_006305). Purification method: Antigen affinity purified.

## Formulation

PBS with 0.02% sodium azide and 50% glycerol pH 7.3.

## Storage

Store at -20°C. DO NOT ALIQUOT

## Clonality

Polyclonal

## Ig Type

Rabbit IgG

## Applications

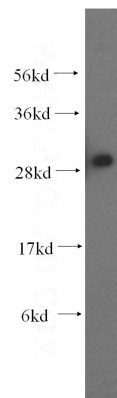
ELISA, WB, IHC, IF

## Dilutions

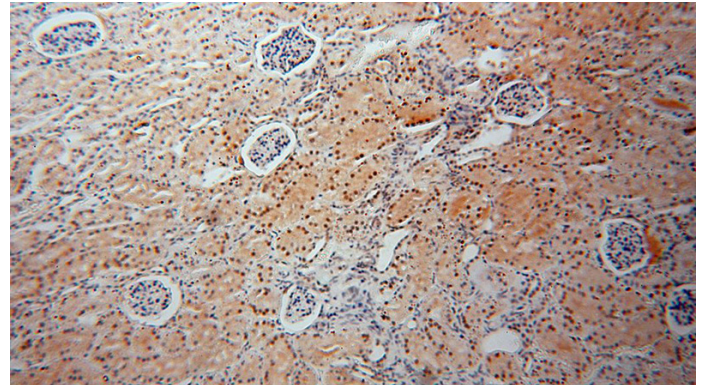
Recommended Dilution:

WB: 1:500-1:5000

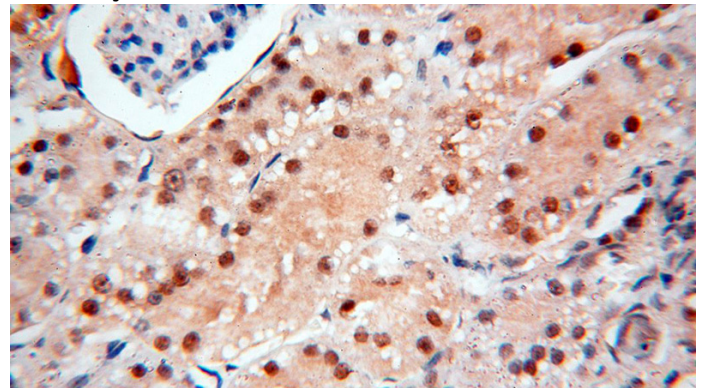
## Validations



human brain tissue were subjected to SDS PAGE followed by western blot with Catalog No:108104(ANP32A antibody) at dilution of 1:500



Immunohistochemical of paraffin-embedded human kidney using Catalog No:108104(ANP32A antibody) at dilution of 1:100 (under 10x lens)



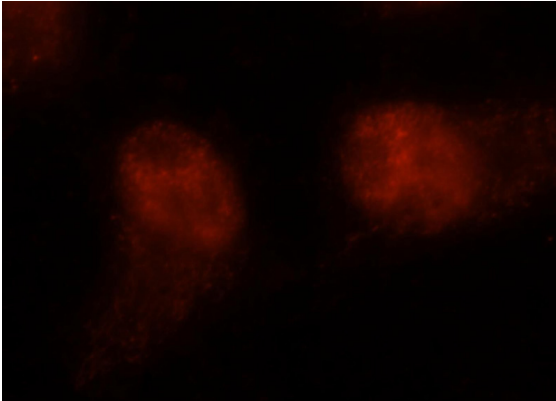
Immunohistochemical of paraffin-embedded human kidney using Catalog No:108104(ANP32A antibody) at dilution of 1:100 (under 10x lens)

# ANP32A antibody

Catalog Number: 108104

---

antibody) at dilution of 1:100 (under 40x lens)



Immunofluorescent analysis of A2780 cells, using ANP32A antibody Catalog No:108104 at 1:25 dilution and Rhodamine-labeled goat anti-rabbit IgG (red).