

ANKLE2 antibody



Catalog Number: 108062

Product name

ANKLE2 antibody

Specificity

Human; other species not tested.

Antibody description

ANKLE2 Rabbit Polyclonal antibody. Positive WB detected in HeLa cells, HEK-293 cells. Observed molecular weight by Western-blot: 105-110 kDa

Preparation

This antibody was obtained by immunization of ANKLE2 recombinant protein (Accession Number: NM_015114). Purification method: Antigen affinity purified.

Formulation

PBS with 0.1% sodium azide and 50% glycerol pH 7.3.

Storage

Store at -20°C. DO NOT ALIQUOT

Clonality

Polyclonal

Ig Type

Rabbit IgG

Applications

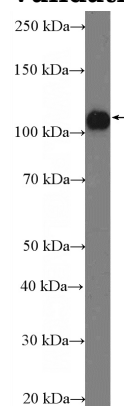
ELISA, WB

Dilutions

Recommended Dilution:

WB: 1:500-1:5000

Validations



HeLa cells were subjected to SDS PAGE followed by western blot with Catalog No:108062(ANKLE2 Antibody) at dilution of 1:1000