

# ANGPTL1 antibody

Catalog Number: 108055

## Product name

ANGPTL1 antibody

IHC: 1:20-1:200

## Specificity

Human, Mouse, Rat; other species not tested.

## Antibody description

ANGPTL1 Rabbit Polyclonal antibody. Positive WB detected in HepG2 cells, BxPC-3 cells, HEK-293 cells, HeLa cells, human heart tissue. Positive IHC detected in human liver cancer tissue, human ovary tumor tissue. Observed molecular weight by Western-blot: 55 kDa

## Preparation

This antibody was obtained by immunization of ANGPTL1 recombinant protein (Accession Number: NM\_001376763). Purification method: Antigen affinity purified.

## Formulation

PBS with 0.02% sodium azide and 50% glycerol pH 7.3.

## Storage

Store at -20°C. DO NOT ALIQUOT

## Clonality

Polyclonal

## Ig Type

Rabbit IgG

## Applications

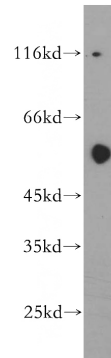
ELISA, WB, IHC

## Dilutions

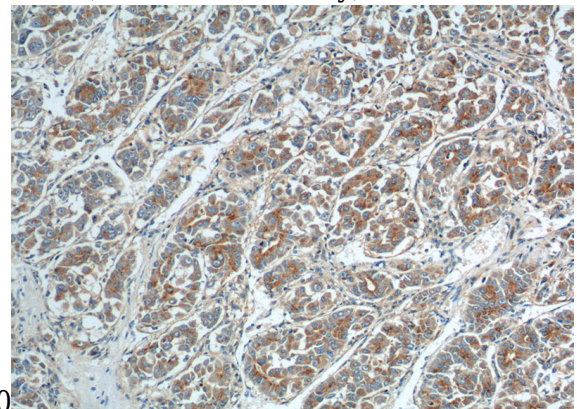
Recommended Dilution:

WB: 1:200-1:2000

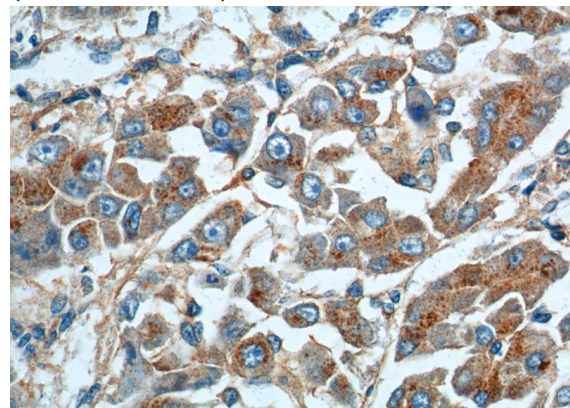
## Validations



HepG2 cells were subjected to SDS PAGE followed by western blot with Catalog No:108055(ANGPTL1 antibody) at dilution of



1:300  
Immunohistochemistry of paraffin-embedded human liver cancer tissue slide using Catalog No:108055(ANGPTL1 Antibody) at dilution of 1:50 (under 10x lens).



Immunohistochemistry of paraffin-embedded human liver cancer tissue slide using Catalog

# ANGPTL1 antibody



Catalog Number: 108055

---

No:108055(ANGPTL1 Antibody) at dilution of 1:50 (under 40x lens).