

APPL1 antibody



Catalog Number: 108041

Product name

APPL1 antibody

Specificity

Human, Mouse, Rat; other species not tested.

Antibody description

APPL1 Rabbit Polyclonal antibody. Positive IP detected in mouse brain tissue. Positive WB detected in human brain tissue, HEK-293 cells, HeLa cells, HT-1080 cells, human heart tissue, mouse brain tissue. Positive IF detected in HepG2 cells. Positive IHC detected in human breast cancer tissue. Observed molecular weight by Western-blot: 80 kDa

Preparation

This antibody was obtained by immunization of APPL1 recombinant protein (Accession Number: NM_012096). Purification method: Antigen affinity purified.

Formulation

PBS with 0.02% sodium azide and 50% glycerol pH 7.3.

Storage

Store at -20°C. DO NOT ALIQUOT

Clonality

Polyclonal

Ig Type

Rabbit IgG

Applications

ELISA, WB, IF, IHC, IP

Dilutions

Recommended Dilution:

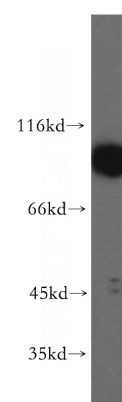
WB: 1:1000-1:10000

IP: 1:500-1:5000

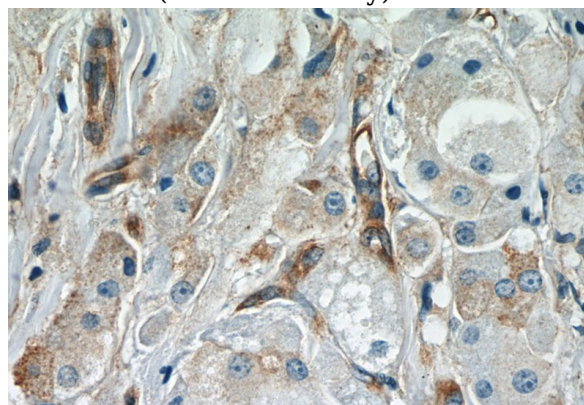
IHC: 1:20-1:200

IF: 1:10-1:100

Validations



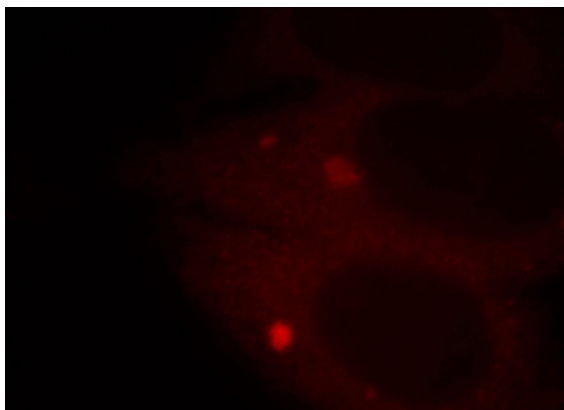
human brain tissue were subjected to SDS PAGE followed by western blot with Catalog No:108041(APPL1 antibody) at dilution of 1:500



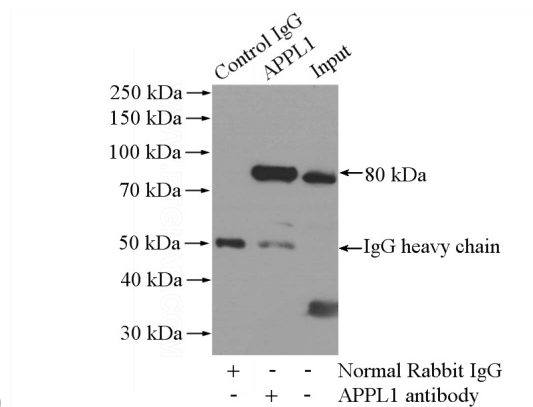
Immunohistochemistry of paraffin-embedded human breast cancer slide using Catalog No:108041(APPL1 Antibody) at dilution of 1:50

APPL1 antibody

Catalog Number: 108041



Immunofluorescent analysis of HepG2 cells, using APPL1 antibody Catalog No:108041 at 1:25 dilution and Rhodamine-labeled goat anti-rabbit



IgG (red).

IP Result of anti-APPL1 (IP:Catalog No:108041, 4ug; Detection:Catalog No:108041 1:1000) with mouse brain tissue lysate 2640ug.