

# Apolipoprotein H antibody



Catalog Number: 108038

## Product name

Apolipoprotein H antibody

## Specificity

Human; other species not tested.

## Antibody description

Apolipoprotein H Rabbit Polyclonal antibody. Positive IHC detected in human liver cancer tissue. Positive WB detected in human blood tissue. Observed molecular weight by Western-blot: 43-55 kDa

## Preparation

This antibody was obtained by immunization of Apolipoprotein H recombinant protein (Accession Number: NM\_000042). Purification method: Antigen affinity purified.

## Formulation

PBS with 0.1% sodium azide and 50% glycerol pH 7.3.

## Storage

Store at -20°C. DO NOT ALIQUOT

## Clonality

Polyclonal

## Ig Type

Rabbit IgG

## Applications

ELISA, WB, IHC

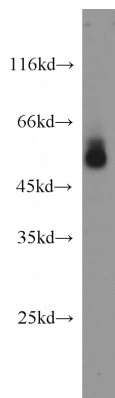
## Dilutions

Recommended Dilution:

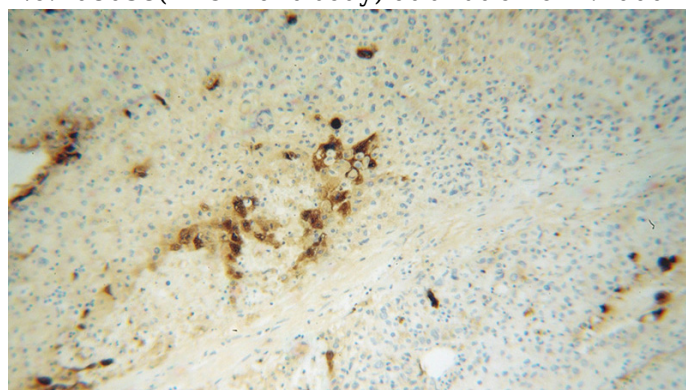
WB: 1:500-1:5000

IHC: 1:20-1:200

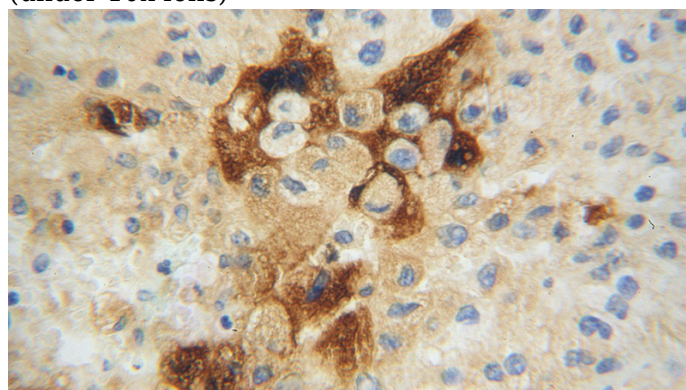
## Validations



human blood tissue were subjected to SDS PAGE followed by western blot with Catalog No:108038(APOH antibody) at dilution of 1:1000



Immunohistochemical of paraffin-embedded human liver cancer using Catalog No:108038(APOH antibody) at dilution of 1:100 (under 10x lens)



Immunohistochemical of paraffin-embedded human liver cancer using Catalog No:108038(APOH antibody) at dilution of 1:100

# Apolipoprotein H antibody



Catalog Number: 108038

---

(under 40x lens)