

Product name

AMH antibody

Specificity

Human; other species not tested.

Antibody description

AMH Rabbit Polyclonal antibody. Positive IF detected in HeLa cells. Positive IHC detected in human ovary tissue.

Preparation

This antibody was obtained by immunization of AMH recombinant protein (Accession Number: NM_000479). Purification method: Antigen Affinity purified.

Formulation

PBS with 0.02% sodium azide and 50% glycerol pH 7.3.

Storage

Store at -20°C. DO NOT ALIQUOT

Clonality

Polyclonal

Ig Type

Rabbit IgG

Applications

ELISA, IHC, IF

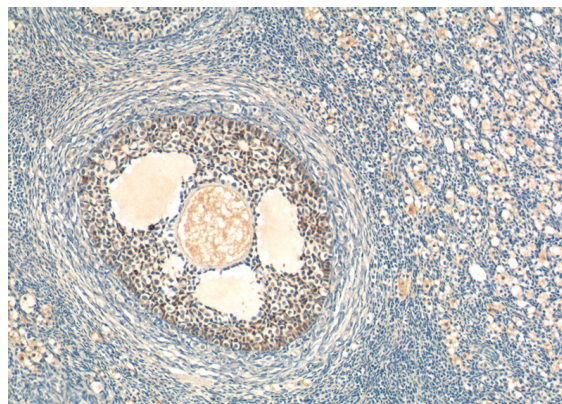
Dilutions

Recommended Dilution:

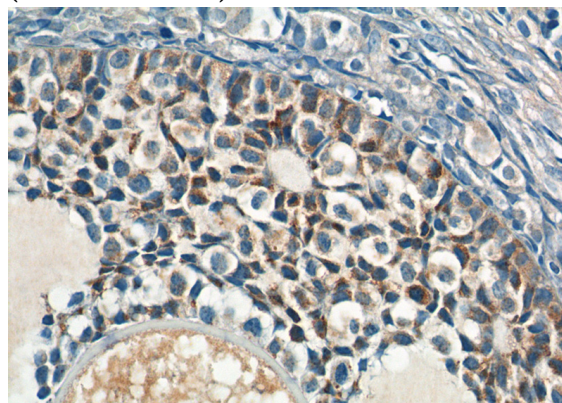
IHC: 1:20-1:200

IF: 1:20-1:200

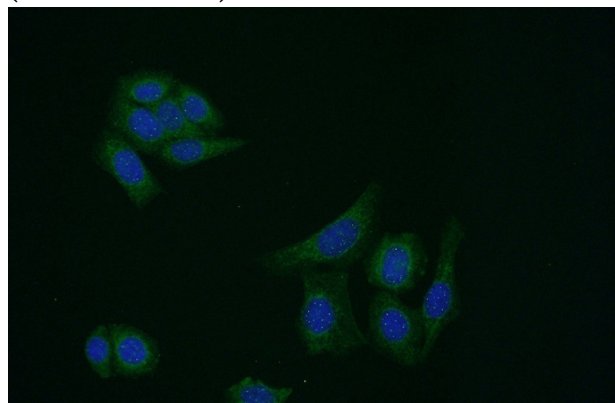
Validations



Immunohistochemistry of paraffin-embedded human ovary tissue slide using Catalog No:107992(AMH Antibody) at dilution of 1:200 (under 10x lens)



Immunohistochemistry of paraffin-embedded human ovary tissue slide using Catalog No:107992(AMH Antibody) at dilution of 1:200 (under 40x lens)



Immunofluorescent analysis of HeLa cells using Catalog No:107992(AMH Antibody) at dilution of 1:50 and Alexa Fluor 488-conjugated AffiniPure

AMH antibody



Catalog Number: 107992

Goat Anti-Rabbit IgG(H+L)