

# ALG1 antibody

Catalog Number: 107979

## Product name

ALG1 antibody

IHC: 1:20-1:200

IF: 1:20-1:200

## Specificity

Human, Mouse, Rat; other species not tested.

## Antibody description

ALG1 Rabbit Polyclonal antibody. Positive IHC detected in human gliomas tissue. Positive IF detected in HeLa cells. Positive WB detected in HeLa cells. Observed molecular weight by Western-blot: 47-53 kDa

## Preparation

This antibody was obtained by immunization of ALG1 recombinant protein (Accession Number: NM\_019109). Purification method: Antigen affinity purified.

## Formulation

PBS with 0.1% sodium azide and 50% glycerol pH 7.3.

## Storage

Store at -20°C. DO NOT ALIQUOT

## Clonality

Polyclonal

## Ig Type

Rabbit IgG

## Applications

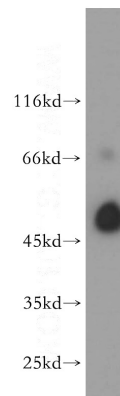
ELISA, WB, IHC, IF

## Dilutions

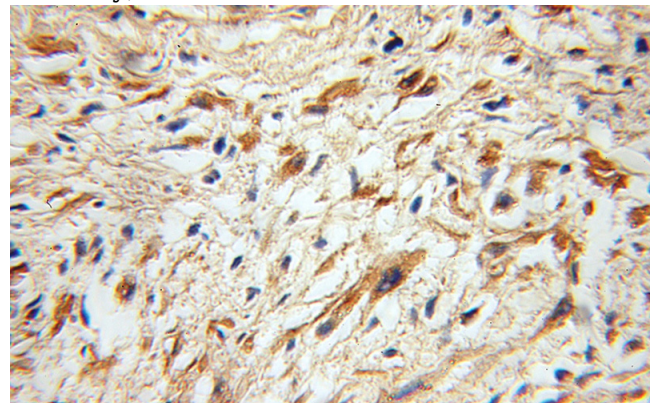
Recommended Dilution:

WB: 1:500-1:5000

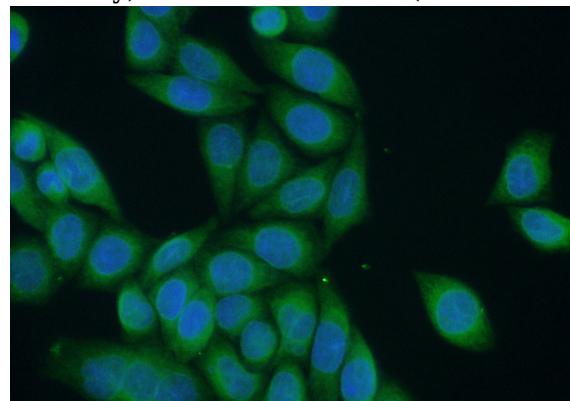
## Validations



HeLa cells were subjected to SDS PAGE followed by western blot with Catalog No:107979(ALG1 antibody) at dilution of 1:300



Immunohistochemical of paraffin-embedded human gliomas using Catalog No:107979(ALG1 antibody) at dilution of 1:100 (under 10x lens)



Immunofluorescent analysis of (10% Formaldehyde) fixed HeLa cells using Catalog

# ALG1 antibody



Catalog Number: 107979

---

No:107979(ALG1 Antibody) at dilution of 1:50 and Alexa Fluor 488-conjugated AffiniPure Goat Anti-Rabbit IgG(H+L)