

# ALDH3B1 antibody



Catalog Number: 107969

## Product name

ALDH3B1 antibody

## Specificity

Human, Mouse, Rat; other species not tested.

## Antibody description

ALDH3B1 Rabbit Polyclonal antibody. Positive WB detected in RAW 264.7 cells. Positive IHC detected in human lung cancer tissue, human renal cell carcinoma tissue. Observed molecular weight by Western-blot: 55 kDa

## Preparation

This antibody was obtained by immunization of ALDH3B1 recombinant protein (Accession Number: BC002553). Purification method: Antigen affinity purified.

## Formulation

PBS with 0.1% sodium azide and 50% glycerol pH 7.3.

## Storage

Store at -20°C. DO NOT ALIQUOT

## Clonality

Polyclonal

## Ig Type

Rabbit IgG

## Applications

ELISA, WB, IHC

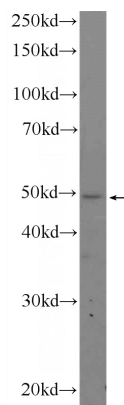
## Dilutions

Recommended Dilution:

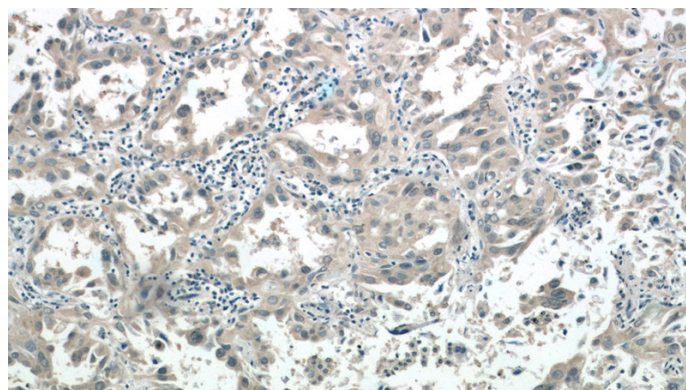
WB: 1:200-1:1000

IHC: 1:20-1:200

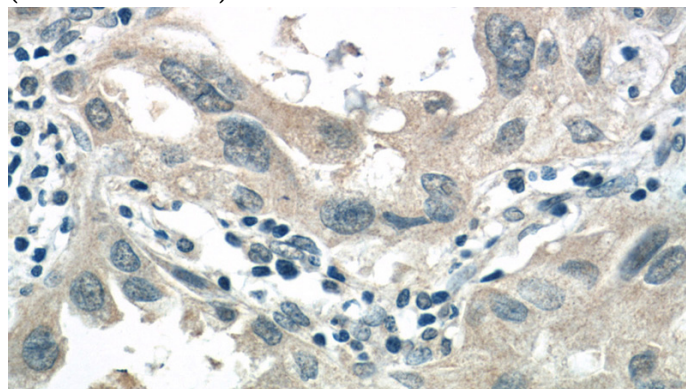
## Validations



RAW 264.7 cells were subjected to SDS PAGE followed by western blot with Catalog No:107969(ALDH3B1 Antibody) at dilution of 1:300



Immunohistochemistry of paraffin-embedded human lung cancer tissue slide using Catalog No:107969(ALDH3B1 Antibody) at dilution of 1:50 (under 10x lens)



Immunohistochemistry of paraffin-embedded human lung cancer tissue slide using Catalog

# ALDH3B1 antibody



Catalog Number: 107969

---

No:107969(ALDH3B1 Antibody) at dilution of 1:50 (under 40x lens)