

ALDH1A3 antibody



Catalog Number: 107961

Product name

ALDH1A3 antibody

Recommended Dilution:

WB: 1:500-1:5000

Immunogen

[Human ALDH1A3 Recombinant protein \(His tag\)](#)

IHC: 1:20-1:200

IF: 1:20-1:200

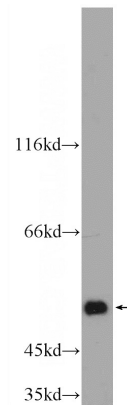
Specificity

Human, Mouse; other species not tested.

Validations

Antibody description

ALDH1A3 Rabbit Polyclonal antibody. Positive IHC detected in human liver cancer tissue. Positive IF detected in HepG2 cells. Positive WB detected in mouse liver tissue, HepG2 cells, L02 cells, mouse kidney tissue. Observed molecular weight by Western-blot: 50 kDa



Preparation

This antibody was obtained by immunization of ALDH1A3 recombinant protein (Accession Number: NM_000693). Purification method: Antigen affinity purified.

mouse liver tissue were subjected to SDS PAGE followed by western blot with Catalog No:107961(ALDH1A3 Antibody) at dilution of

Formulation

PBS with 0.1% sodium azide and 50% glycerol pH 7.3.

Storage

Store at -20°C. DO NOT ALIQUOT

Clonality

Polyclonal

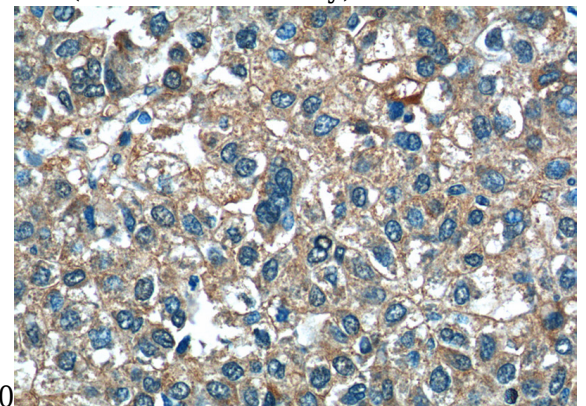
Ig Type

Rabbit IgG

Applications

ELISA, WB, IHC, IF

Dilutions

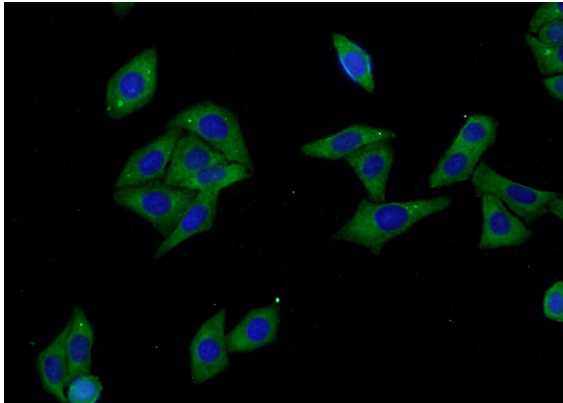


1:1000
Immunohistochemistry of paraffin-embedded human liver cancer tissue slide using Catalog No:107961(ALDH1A3 Antibody) at dilution of 1:50 (under 40x lens)

ALDH1A3 antibody



Catalog Number: 107961



Immunofluorescent analysis of HepG2 cells using Catalog No:107961(ALDH1A3 Antibody) at dilution of 1:50 and Alexa Fluor 488-conjugated AffiniPure Goat Anti-Rabbit IgG(H+L)